

Datasheet for ABIN654275  
**anti-LRRC33 antibody (C-Term)**



[Go to Product page](#)

2 Images

Overview

Quantity:	400 µL
Target:	LRRC33 (NRROS)
Binding Specificity:	AA 611-640, C-Term
Reactivity:	Human
Host:	Rabbit
Clonality:	Polyclonal
Conjugate:	This LRRC33 antibody is un-conjugated
Application:	Western Blotting (WB), Immunohistochemistry (Paraffin-embedded Sections) (IHC (p))

Product Details

Immunogen:	This LRRC33 antibody is generated from rabbits immunized with a KLH conjugated synthetic peptide between 611-640 amino acids from the C-terminal region of human LRRC33.
Clone:	RB27852
Isotype:	Ig Fraction
Purification:	This antibody is purified through a protein A column, followed by peptide affinity purification.

Target Details

Target:	LRRC33 (NRROS)
Alternative Name:	LRRC33 ( <a href="#">NRROS Products</a> )
Molecular Weight:	76366

## Target Details

Gene ID: 375387

NCBI Accession: [NP\\_940967](#)

UniProt: [Q86YC3](#)

## Application Details

Application Notes: WB: 1:1000. IHC-P: 1:50~100

Restrictions: For Research Use only

## Handling

Format: Liquid

Buffer: Purified polyclonal antibody supplied in PBS with 0.09 % (W/V) sodium azide.

Preservative: Sodium azide

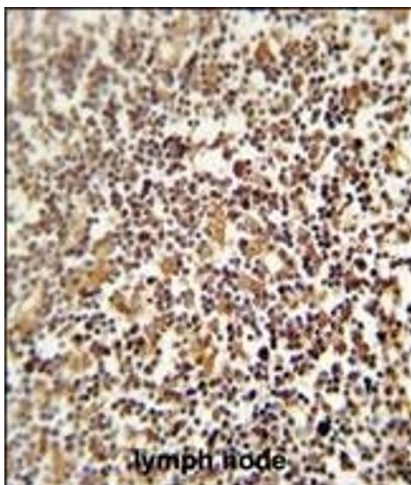
Precaution of Use: This product contains Sodium azide: a POISONOUS AND HAZARDOUS SUBSTANCE which should be handled by trained staff only.

Storage: 4 °C, -20 °C

Storage Comment: Maintain refrigerated at 2-8 °C for up to 6 months. For long term storage store at -20 °C in small aliquots to prevent freeze-thaw cycles.

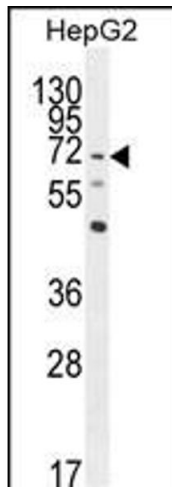
Expiry Date: 6 months

## Images



### Immunohistochemistry (Paraffin-embedded Sections)

**Image 1.** LRRC33 antibody (C-term) (ABIN654275 and ABIN2844083) immunohistochemistry analysis in formalin fixed and paraffin embedded human lymph node followed by peroxidase conjugation of the secondary antibody and DAB staining. This data demonstrates the use of the LRRC33 antibody (C-term) for immunohistochemistry. Clinical relevance has not been evaluated.



### Western Blotting

**Image 2.** LRRC33 Antibody (C-term) (ABIN654275 and ABIN2844083) western blot analysis in HepG2 cell line lysates (35 µg/lane). This demonstrates the LRRC33 antibody detected the LRRC33 protein (arrow).