

Datasheet for ABIN654276

anti-Primary Ciliary Dyskinesia Protein 1 (PCDP1) (AA 787-816), (C-Term) antibody



[Go to Product page](#)

2 Images

Overview

Quantity:	400 µL
Target:	Primary Ciliary Dyskinesia Protein 1 (PCDP1)
Binding Specificity:	AA 787-816, C-Term
Reactivity:	Human, Mouse
Host:	Rabbit
Clonality:	Polyclonal
Conjugate:	Un-conjugated
Application:	Western Blotting (WB), Flow Cytometry (FACS)

Product Details

Immunogen:	This PCDP1 antibody is generated from rabbits immunized with a KLH conjugated synthetic peptide between 787-816 amino acids from the C-terminal region of humanPCDP1.
Clone:	RB27853
Isotype:	Ig Fraction
Purification:	This antibody is purified through a protein A column, followed by peptide affinity purification.

Target Details

Target:	Primary Ciliary Dyskinesia Protein 1 (PCDP1)
Alternative Name:	PCDP1 (PCDP1 Products)
Molecular Weight:	96891

Target Details

Gene ID: 200373

NCBI Accession: [NP_001257978](#)

UniProt: [Q4G0U5](#)

Application Details

Application Notes: WB: 1:1000. FC: 1:10~50

Restrictions: For Research Use only

Handling

Format: Liquid

Buffer: Purified polyclonal antibody supplied in PBS with 0.09 % (W/V) sodium azide.

Preservative: Sodium azide

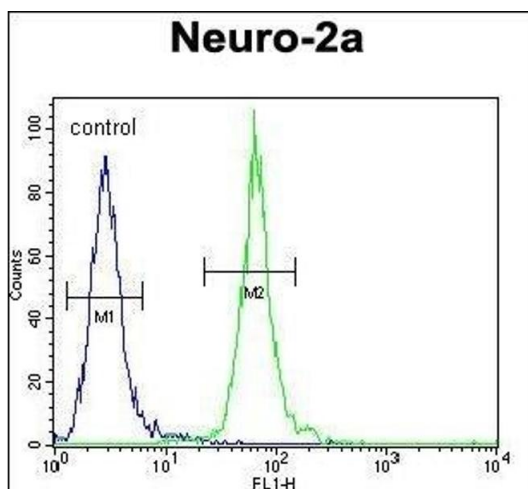
Precaution of Use: This product contains Sodium azide: a POISONOUS AND HAZARDOUS SUBSTANCE which should be handled by trained staff only.

Storage: 4 °C, -20 °C

Storage Comment: Maintain refrigerated at 2-8 °C for up to 6 months. For long term storage store at -20 °C in small aliquots to prevent freeze-thaw cycles.

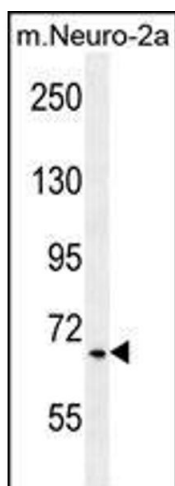
Expiry Date: 6 months

Validation report #104401 for Cleavage Under Targets and Release Using Nuclease (CUT&RUN)



Flow Cytometry

Image 1. PCDP1 Antibody (C-term) (ABIN654276 and ABIN2844084) flow cytometric analysis of Neuro-2a cells (right histogram) compared to a negative control cell (left histogram). FITC-conjugated goat-anti-rabbit secondary antibodies were used for the analysis.



Western Blotting

Image 2. PCDP1 Antibody (C-term) (ABIN654276 and ABIN2844084) western blot analysis in mouse Neuro-2a cell line lysates (35 µg/lane). This demonstrates the PCDP1 antibody detected the PCDP1 protein (arrow).