

Datasheet for ABIN654292  
**anti-PEAR1 antibody (C-Term)**[Go to Product page](#)

## 2 Images

## Overview

Quantity:	400 µL
Target:	PEAR1
Binding Specificity:	AA 961-990, C-Term
Reactivity:	Human
Host:	Rabbit
Clonality:	Polyclonal
Conjugate:	This PEAR1 antibody is un-conjugated
Application:	Western Blotting (WB), Immunohistochemistry (Paraffin-embedded Sections) (IHC (p))

## Product Details

Immunogen:	This PEAR1 antibody is generated from rabbits immunized with a KLH conjugated synthetic peptide between 961-990 amino acids from the C-terminal region of human PEAR1.
Clone:	RB27891
Isotype:	Ig Fraction
Purification:	This antibody is purified through a protein A column, followed by peptide affinity purification.

## Target Details

Target:	PEAR1
Alternative Name:	PEAR1 ( <a href="#">PEAR1 Products</a> )
Background:	PEAR1 is a platelet receptor that signals upon the formation of platelet-platelet contacts

## Target Details

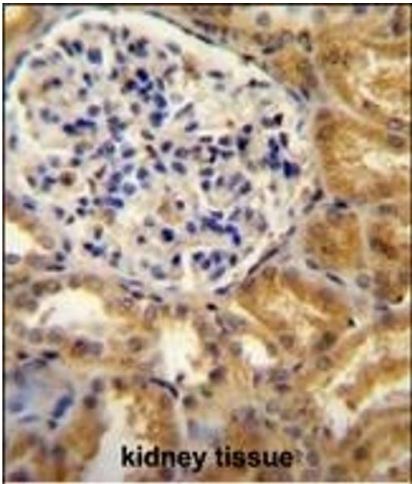
	independent of platelet activation and secondary to platelet aggregation (Nanda et al., 2005 [PubMed 15851471]).
Molecular Weight:	110666
Gene ID:	375033
NCBI Accession:	<a href="#">NP_001073940</a>
UniProt:	<a href="#">Q5VY43</a>

## Application Details

Application Notes:	WB: 1:1000. IHC-P: 1:50~100
Restrictions:	For Research Use only

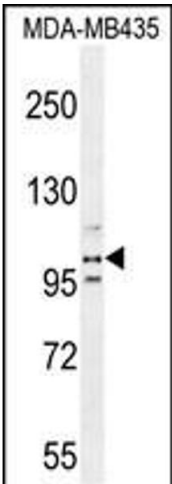
## Handling

Format:	Liquid
Buffer:	Purified polyclonal antibody supplied in PBS with 0.09 % (W/V) sodium azide.
Preservative:	Sodium azide
Precaution of Use:	This product contains Sodium azide: a POISONOUS AND HAZARDOUS SUBSTANCE which should be handled by trained staff only.
Storage:	4 °C,-20 °C
Storage Comment:	Maintain refrigerated at 2-8 °C for up to 6 months. For long term storage store at -20 °C in small aliquots to prevent freeze-thaw cycles.
Expiry Date:	6 months



**Immunohistochemistry (Paraffin-embedded Sections)**

**Image 1.** PEAR1 antibody (C-term) (ABIN654292 and ABIN2844087) immunohistochemistry analysis in formalin fixed and paraffin embedded human kidney tissue followed by peroxidase conjugation of the secondary antibody and DAB staining. This data demonstrates the use of the PEAR1 antibody (C-term) for immunohistochemistry. Clinical relevance has not been evaluated.



**Western Blotting**

**Image 2.** PEAR1 Antibody (C-term) (ABIN654292 and ABIN2844087) western blot analysis in MDA-M cell line lysates (35 µg/lane). This demonstrates the PEAR1 antibody detected the PEAR1 protein (arrow).