

Datasheet for ABIN654302
anti-LYPD4 antibody (AA 104-133)[Go to Product page](#)

2 Images

Overview

Quantity:	400 µL
Target:	LYPD4
Binding Specificity:	AA 104-133
Reactivity:	Human, Mouse
Host:	Rabbit
Clonality:	Polyclonal
Conjugate:	This LYPD4 antibody is un-conjugated
Application:	Western Blotting (WB), Immunohistochemistry (Paraffin-embedded Sections) (IHC (p))

Product Details

Immunogen:	This LYPD4 antibody is generated from rabbits immunized with a KLH conjugated synthetic peptide between 104-133 amino acids from the Central region of human LYPD4.
Clone:	RB27909
Isotype:	Ig Fraction
Purification:	This antibody is purified through a protein A column, followed by peptide affinity purification.

Target Details

Target:	LYPD4
Alternative Name:	LYPD4 (LYPD4 Products)
Molecular Weight:	26763

Target Details

Gene ID:	147719
NCBI Accession:	NP_775777
UniProt:	Q6UWN0

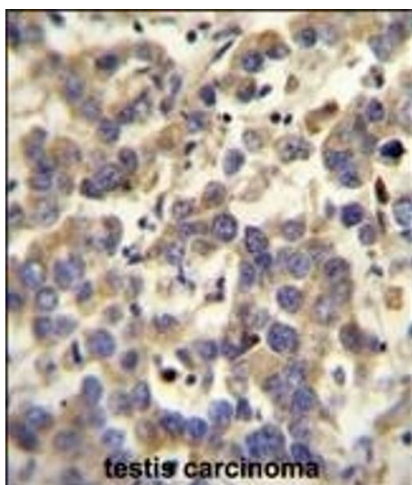
Application Details

Application Notes:	WB: 1:1000. IHC-P: 1:50~100
Restrictions:	For Research Use only

Handling

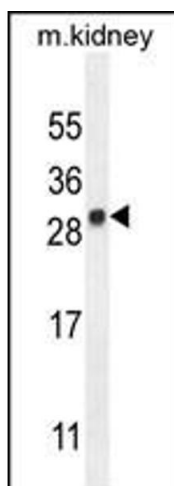
Format:	Liquid
Buffer:	Purified polyclonal antibody supplied in PBS with 0.09 % (W/V) sodium azide.
Preservative:	Sodium azide
Precaution of Use:	This product contains Sodium azide: a POISONOUS AND HAZARDOUS SUBSTANCE which should be handled by trained staff only.
Storage:	4 °C,-20 °C
Storage Comment:	Maintain refrigerated at 2-8 °C for up to 6 months. For long term storage store at -20 °C in small aliquots to prevent freeze-thaw cycles.
Expiry Date:	6 months

Images



Immunohistochemistry (Paraffin-embedded Sections)

Image 1. LYPD4 antibody (Center) (ABIN654302 and ABIN2844090) immunohistochemistry analysis in formalin fixed and paraffin embedded human testis carcinoma followed by peroxidase conjugation of the secondary antibody and DAB staining. This data demonstrates the use of the LYPD4 antibody (Center) for immunohistochemistry. Clinical relevance has not been evaluated.



Western Blotting

Image 2. LYPD4 Antibody (Center) (ABIN654302 and ABIN2844090) western blot analysis in mouse kidney tissue lysates (35 µg/lane). This demonstrates the LYPD4 antibody detected the LYPD4 protein (arrow).