

Datasheet for ABIN654312  
**anti-SYT8 antibody (AA 60-88)**[Go to Product page](#)

## 2 Images

## Overview

Quantity:	400 µL
Target:	SYT8
Binding Specificity:	AA 60-88
Reactivity:	Human, Mouse
Host:	Rabbit
Clonality:	Polyclonal
Conjugate:	This SYT8 antibody is un-conjugated
Application:	Western Blotting (WB), Immunohistochemistry (Paraffin-embedded Sections) (IHC (p))

## Product Details

Immunogen:	This SYT8 antibody is generated from rabbits immunized with a KLH conjugated synthetic peptide between 60-88 amino acids from the Central region of human SYT8.
Clone:	RB27957
Isotype:	Ig Fraction
Purification:	This antibody is purified through a protein A column, followed by peptide affinity purification.

## Target Details

Target:	SYT8
Alternative Name:	SYT8 ( <a href="#">SYT8 Products</a> )
Background:	Synaptotagmins, such as SYT8, share a common domain structure that includes a

## Target Details

transmembrane domain and a cytoplasmic region composed of 2 C2 domains. Some synaptotagmins are involved in synaptic membrane fusion, while others have a more general function in endocytosis. For further information on synaptotagmins, see MIM 185605.

Molecular Weight: 44138

Gene ID: 90019

NCBI Accession: [NP\\_612634](#)

UniProt: [Q8NBV8](#)

## Application Details

Application Notes: WB: 1:1000. IHC-P: 1:50~100

Restrictions: For Research Use only

## Handling

Format: Liquid

Buffer: Purified polyclonal antibody supplied in PBS with 0.09 % (W/V) sodium azide.

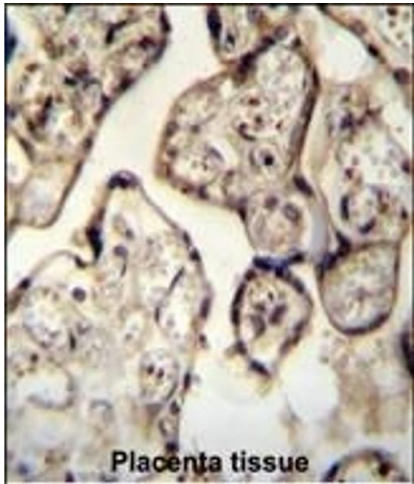
Preservative: Sodium azide

Precaution of Use: This product contains Sodium azide: a POISONOUS AND HAZARDOUS SUBSTANCE which should be handled by trained staff only.

Storage: 4 °C, -20 °C

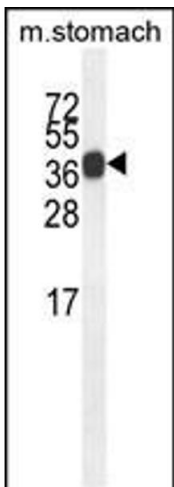
Storage Comment: Maintain refrigerated at 2-8 °C for up to 6 months. For long term storage store at -20 °C in small aliquots to prevent freeze-thaw cycles.

Expiry Date: 6 months



**Immunohistochemistry (Paraffin-embedded Sections)**

**Image 1.** SYT8 antibody (Center) (ABIN654312 and ABIN2844096) immunohistochemistry analysis in formalin fixed and paraffin embedded human Placenta tissue followed by peroxidase conjugation of the secondary antibody and DAB staining. This data demonstrates the use of the SYT8 antibody (Center) for immunohistochemistry. Clinical relevance has not been evaluated.



**Western Blotting**

**Image 2.** SYT8 Antibody (Center) (ABIN654312 and ABIN2844096) western blot analysis in mouse stomach tissue lysates (35 µg/lane). This demonstrates the SYT8 antibody detected the SYT8 protein (arrow).