

Datasheet for ABIN654315
anti-SPDYE3 antibody (AA 455-483)[Go to Product page](#)

3 Images

Overview

Quantity:	400 µL
Target:	SPDYE3
Binding Specificity:	AA 455-483
Reactivity:	Human
Host:	Rabbit
Clonality:	Polyclonal
Conjugate:	This SPDYE3 antibody is un-conjugated
Application:	Western Blotting (WB), Flow Cytometry (FACS), Immunohistochemistry (Paraffin-embedded Sections) (IHC (p))

Product Details

Immunogen:	This SPDYE3 antibody is generated from rabbits immunized with a KLH conjugated synthetic peptide between 455-483 amino acids from the Central region of human SPDYE3.
Clone:	RB27963
Isotype:	Ig Fraction
Purification:	This antibody is purified through a protein A column, followed by peptide affinity purification.

Target Details

Target:	SPDYE3
Alternative Name:	SPDYE3 (SPDYE3 Products)

Target Details

Molecular Weight:	63895
Gene ID:	441272
NCBI Accession:	NP_001004351
UniProt:	A6NKU9

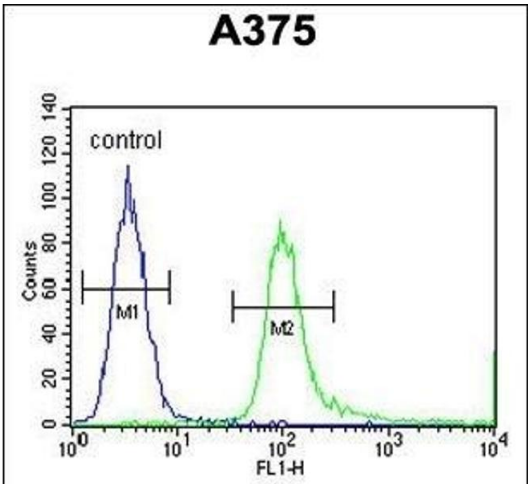
Application Details

Application Notes:	WB: 1:1000. IHC-P: 1:50~100. FC: 1:10~50
Restrictions:	For Research Use only

Handling

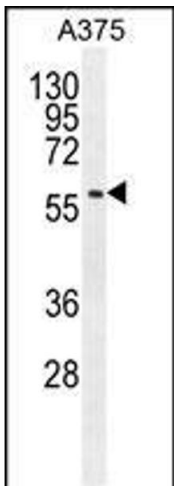
Format:	Liquid
Buffer:	Purified polyclonal antibody supplied in PBS with 0.09 % (W/V) sodium azide.
Preservative:	Sodium azide
Precaution of Use:	This product contains Sodium azide: a POISONOUS AND HAZARDOUS SUBSTANCE which should be handled by trained staff only.
Storage:	4 °C,-20 °C
Storage Comment:	Maintain refrigerated at 2-8 °C for up to 6 months. For long term storage store at -20 °C in small aliquots to prevent freeze-thaw cycles.
Expiry Date:	6 months

Images



Flow Cytometry

Image 1. SPDYE3 Antibody (Center) (ABIN654315 and ABIN2844097) flow cytometric analysis of cells (right histogram) compared to a negative control cell (left histogram).FITC-conjugated goat-anti-rabbit secondary antibodies were used for the analysis.



Western Blotting

Image 2. SPDYE3 Antibody (Center) (ABIN654315 and ABIN2844097) western blot analysis in cell line lysates (35 μ g/lane). This demonstrates the SPDYE3 antibody detected the SPDYE3 protein (arrow).



Immunohistochemistry (Paraffin-embedded Sections)

Image 3. SPDYE3 antibody (Center) (ABIN654315 and ABIN2844097) immunohistochemistry analysis in formalin fixed and paraffin embedded human cervical tissue followed by peroxidase conjugation of the secondary antibody and DAB staining. This data demonstrates the use of the SPDYE3 antibody (Center) for immunohistochemistry. Clinical relevance has not been evaluated.