

Datasheet for ABIN654321
anti-DTWD2 antibody (AA 109-138)[Go to Product page](#)

1 Image

Overview

Quantity:	400 µL
Target:	DTWD2
Binding Specificity:	AA 109-138
Reactivity:	Human, Mouse
Host:	Rabbit
Clonality:	Polyclonal
Conjugate:	This DTWD2 antibody is un-conjugated
Application:	Western Blotting (WB)

Product Details

Immunogen:	This DTWD2 antibody is generated from rabbits immunized with a KLH conjugated synthetic peptide between 109-138 amino acids from the Central region of human DTWD2.
Clone:	RB27974
Isotype:	Ig Fraction
Predicted Reactivity:	Pr
Purification:	This antibody is purified through a protein A column, followed by peptide affinity purification.

Target Details

Target:	DTWD2
Alternative Name:	DTWD2 (DTWD2 Products)

Target Details

Molecular Weight:	33416
Gene ID:	285605
NCBI Accession:	NP_775937
UniProt:	Q8NBA8

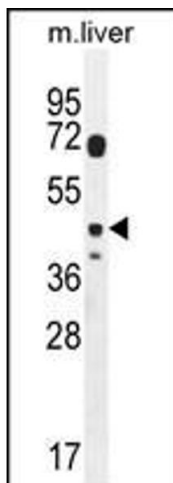
Application Details

Application Notes:	WB: 1:1000
Restrictions:	For Research Use only

Handling

Format:	Liquid
Buffer:	Purified polyclonal antibody supplied in PBS with 0.09 % (W/V) sodium azide.
Preservative:	Sodium azide
Precaution of Use:	This product contains Sodium azide: a POISONOUS AND HAZARDOUS SUBSTANCE which should be handled by trained staff only.
Storage:	4 °C,-20 °C
Storage Comment:	Maintain refrigerated at 2-8 °C for up to 6 months. For long term storage store at -20 °C in small aliquots to prevent freeze-thaw cycles.
Expiry Date:	6 months

Images



Western Blotting

Image 1. DTWD2 Antibody (Center) (ABIN654321 and ABIN2844102) western blot analysis in mouse liver tissue lysates (35 µg/lane). This demonstrates the DTWD2 antibody detected the DTWD2 protein (arrow).