



[Go to Product page](#)

Datasheet for ABIN654330
anti-CEPT1 antibody (N-Term)

5 Images

Overview

Quantity:	400 µL
Target:	CEPT1
Binding Specificity:	AA 29-57, N-Term
Reactivity:	Human, Mouse
Host:	Rabbit
Clonality:	Polyclonal
Conjugate:	This CEPT1 antibody is un-conjugated
Application:	Western Blotting (WB), Immunohistochemistry (Paraffin-embedded Sections) (IHC (p))

Product Details

Immunogen:	This CEPT1 antibody is generated from rabbits immunized with a KLH conjugated synthetic peptide between 29-57 amino acids from the N-terminal region of human CEPT1.
Clone:	RB28024
Isotype:	Ig Fraction
Predicted Reactivity:	Rat, X
Purification:	This antibody is purified through a protein A column, followed by peptide affinity purification.

Target Details

Target:	CEPT1
Alternative Name:	CEPT1 (CEPT1 Products)

Target Details

Background: Cholinephosphotransferase catalyses the final step in the synthesis of phosphatidylcholine by the transfer of phosphocholine from CDP-choline to diacylglycerol. The synthesis of phosphatidylethanolamine by ethanolaminephosphotransferase occurs using an analogous reaction. This gene codes for a choline/ethanolaminephosphotransferase. The protein can synthesize either choline- or ethanolamine- containing phospholipids. Two alternatively spliced transcripts encoding the same isoform have been identified.

Molecular Weight: 46554

Gene ID: 10390

NCBI Accession: [NP_001007795](#), [NP_006081](#)

UniProt: [Q9Y6K0](#)

Application Details

Application Notes: WB: 1:1000. WB: 1:4000. WB: 1:2000. IHC-P-Leica: 1:500. IHC-P-Leica: 1:500

Restrictions: For Research Use only

Handling

Format: Liquid

Buffer: Purified polyclonal antibody supplied in PBS with 0.09 % (W/V) sodium azide.

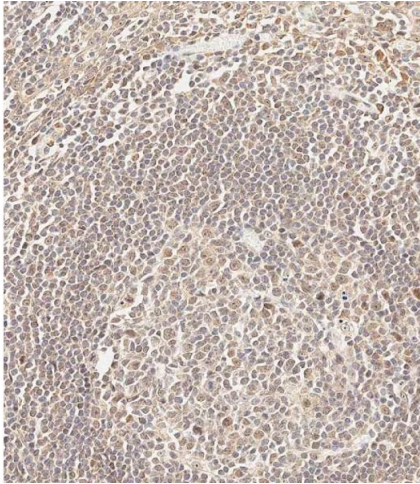
Preservative: Sodium azide

Precaution of Use: This product contains Sodium azide: a POISONOUS AND HAZARDOUS SUBSTANCE which should be handled by trained staff only.

Storage: 4 °C, -20 °C

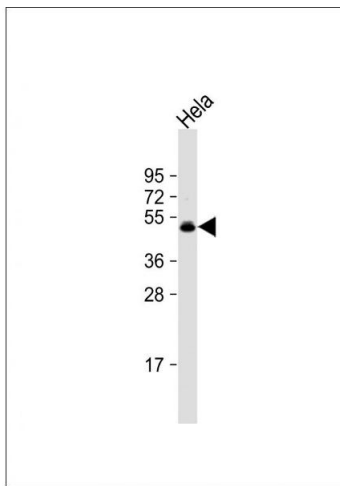
Storage Comment: Maintain refrigerated at 2-8 °C for up to 6 months. For long term storage store at -20 °C in small aliquots to prevent freeze-thaw cycles.

Expiry Date: 6 months



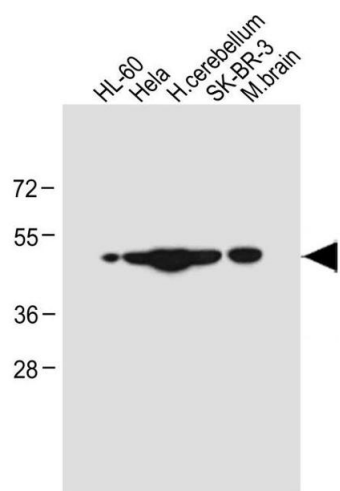
Immunohistochemistry (Paraffin-embedded Sections)

Image 1. Immunohistochemical analysis of paraffin-embedded Human tonsil tissue using (ABIN654330 and ABIN2844106) performed on the Leica® BOND RXm. Tissue was fixed with formaldehyde at room temperature, antigen retrieval was by heat mediation with a EDTA buffer (pH 9.0). Samples were incubated with primary Antibody (1:500) for 1 hours at room temperature. A undiluted biotinylated CRF Anti-Polyvalent HRP Polymer antibody was used as the secondary antibody.



Western Blotting

Image 2. Anti-CEPT1 Antibody (N-term) at 1:1000 dilution + HeLa whole cell lysate Lysates/proteins at 20 µg per lane. Secondary Goat Anti-Rabbit IgG, (H+L), Peroxidase conjugated at 1/10000 dilution. Predicted band size : 47 kDa Blocking/Dilution buffer: 5 % NFDm/TBST.



Western Blotting

Image 3. All lanes : Anti-CEPT1 Antibody (N-term) at 1:4000 dilution Lane 1: HL-60 whole cell lysate Lane 2: HeLa whole cell lysate Lane 3: Human cerebellum tissue lysate Lane 4: SK-BR-3 whole cell lysate Lane 5: Mouse brain tissue lysate Lysates/proteins at 20 µg per lane. Secondary Goat Anti-Rabbit IgG, (H+L), Peroxidase conjugated at 1/10000 dilution. Predicted band size : 47 kDa Blocking/Dilution buffer: 5 % NFDm/TBST.

Please check the [product details page](#) for more images. Overall 5 images are available for ABIN654330.