



[Go to Product page](#)

Datasheet for ABIN654335  
**anti-METTL4 antibody (C-Term)**

4 Images

Overview

Quantity:	200 µL
Target:	METTL4
Binding Specificity:	AA 315-344, C-Term
Reactivity:	Human, Rat
Host:	Rabbit
Clonality:	Polyclonal
Conjugate:	This METTL4 antibody is un-conjugated
Application:	Western Blotting (WB), Immunohistochemistry (Paraffin-embedded Sections) (IHC (p)), Flow Cytometry (FACS)

Product Details

Immunogen:	This METTL4 antibody is generated from rabbits immunized with a KLH conjugated synthetic peptide between 315-344 amino acids from the C-terminal region of human METTL4.
Clone:	RB28044
Isotype:	Ig Fraction
Purification:	This antibody is purified through a protein A column, followed by peptide affinity purification.

Target Details

Target:	METTL4
Alternative Name:	METTL4 ( <a href="#">METTL4 Products</a> )

## Target Details

Molecular Weight:	54041
Gene ID:	64863
NCBI Accession:	<a href="#">NP_073751</a>
UniProt:	<a href="#">Q8N3J2</a>

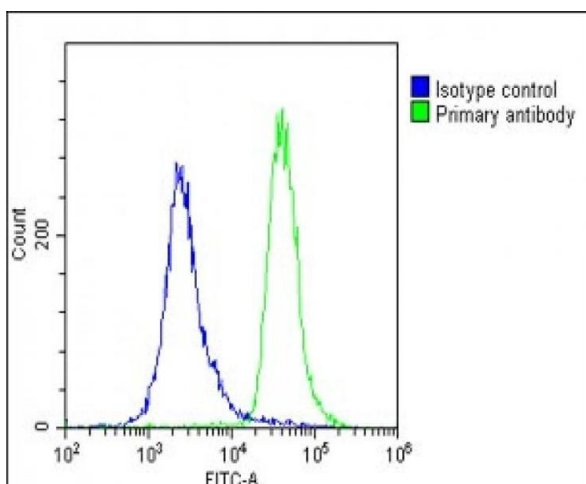
## Application Details

Application Notes:	WB: 1:2000. WB: 1:1000. IHC-P-Leica: 1:500. FC: 1:25
Restrictions:	For Research Use only

## Handling

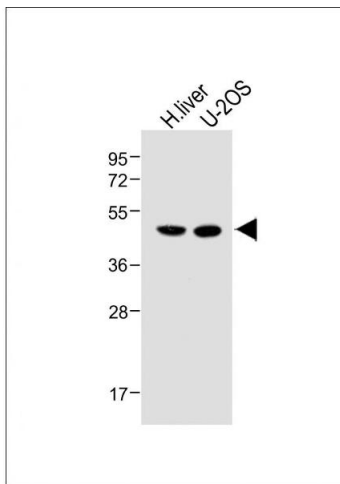
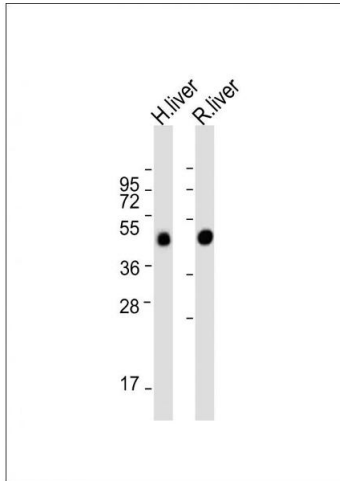
Format:	Liquid
Buffer:	Purified polyclonal antibody supplied in PBS with 0.09 % (W/V) sodium azide.
Preservative:	Sodium azide
Precaution of Use:	This product contains Sodium azide: a POISONOUS AND HAZARDOUS SUBSTANCE which should be handled by trained staff only.
Storage:	4 °C, -20 °C
Storage Comment:	Maintain refrigerated at 2-8 °C for up to 6 months. For long term storage store at -20 °C in small aliquots to prevent freeze-thaw cycles.
Expiry Date:	6 months

## Images



### Flow Cytometry

**Image 1.** Overlay histogram showing U-2 OS cells stained with (ABIN654335 and ABIN2844108)(green line). The cells were fixed with 2 % paraformaldehyde (10 min) and then permeabilized with 90 % methanol for 10 min. The cells were then incubated in 2 % bovine serum albumin to block non-specific protein-protein interactions followed by the antibody ((ABIN654335 and ABIN2844108), 1:25 dilution) for 60 min at 37 °C. The secondary antibody used was Goat-



Anti-Rabbit IgG, DyLight® 488 Conjugated Highly Cross-Adsorbed(1583138) at 1/200 dilution for 40 min at 37 °C. Isotype control antibody (blue line) was rabbit IgG1 (1 µg/1x10<sup>6</sup> cells) used under the same conditions. Acquisition of >10,000 events was performed.

### Western Blotting

**Image 2.** All lanes : Anti-METTL4 Antibody (C-term) at 1:2000 dilution Lane 1: Human liver lysate Lane 2: Rat liver lysate Lysates/proteins at 20 µg per lane. Secondary Goat Anti-Rabbit IgG, (H+L), Peroxidase conjugated at 1/10000 dilution. Predicted band size : 54 kDa Blocking/Dilution buffer: 5 % NFDN/TBST.

### Western Blotting

**Image 3.** All lanes : Anti-METTL4 Antibody (C-term) at 1:1000 dilution Lane 1: Human liver lysate Lane 2: U-2OS whole cell lysate Lysates/proteins at 20 µg per lane. Secondary Goat Anti-Rabbit IgG, (H+L), Peroxidase conjugated at 1/10000 dilution. Predicted band size : 54 kDa Blocking/Dilution buffer: 5 % NFDN/TBST.

Please check the [product details page](#) for more images. Overall 4 images are available for ABIN654335.