

Datasheet for ABIN654338  
**anti-C1orf51 antibody (N-Term)**

## 3 Images

[Go to Product page](#)

## Overview

Quantity:	400 µL
Target:	C1orf51
Binding Specificity:	AA 18-47, N-Term
Reactivity:	Human
Host:	Rabbit
Clonality:	Polyclonal
Conjugate:	This C1orf51 antibody is un-conjugated
Application:	Western Blotting (WB), Flow Cytometry (FACS), Immunohistochemistry (Paraffin-embedded Sections) (IHC (p))

## Product Details

Immunogen:	This C1orf51 antibody is generated from rabbits immunized with a KLH conjugated synthetic peptide between 18-47 amino acids from the N-terminal region of human C1orf51.
Clone:	RB28055
Isotype:	Ig Fraction
Purification:	This antibody is purified through a protein A column, followed by peptide affinity purification.

## Target Details

Target:	C1orf51
Alternative Name:	C1orf51 ( <a href="#">C1orf51 Products</a> )

## Target Details

Molecular Weight:	41443
Gene ID:	148523
NCBI Accession:	<a href="#">NP_653298</a>
UniProt:	<a href="#">Q8N365</a>

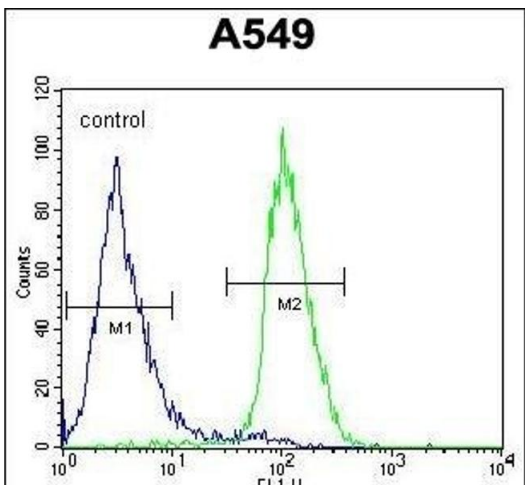
## Application Details

Application Notes:	WB: 1:1000. IHC-P: 1:50~100. FC: 1:10~50
Restrictions:	For Research Use only

## Handling

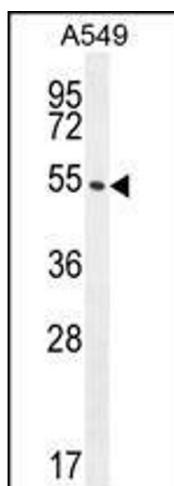
Format:	Liquid
Buffer:	Purified polyclonal antibody supplied in PBS with 0.09 % (W/V) sodium azide.
Preservative:	Sodium azide
Precaution of Use:	This product contains Sodium azide: a POISONOUS AND HAZARDOUS SUBSTANCE which should be handled by trained staff only.
Storage:	4 °C, -20 °C
Storage Comment:	Maintain refrigerated at 2-8 °C for up to 6 months. For long term storage store at -20 °C in small aliquots to prevent freeze-thaw cycles.
Expiry Date:	6 months

## Images



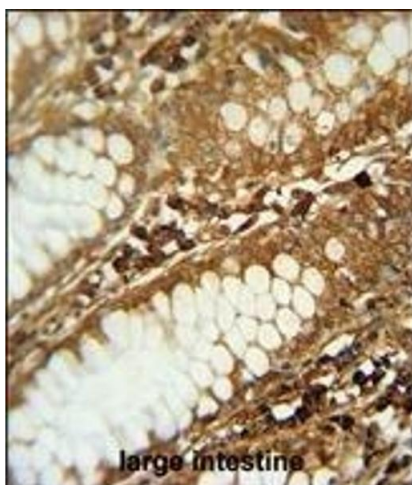
### Flow Cytometry

**Image 1.** C1orf51 Antibody (N-term) (ABIN654338 and ABIN2844109) flow cytometric analysis of A549 cells (right histogram) compared to a negative control cell (left histogram). FITC-conjugated goat-anti-rabbit secondary antibodies were used for the analysis.



#### Western Blotting

**Image 2.** C1orf51 Antibody (N-term) (ABIN654338 and ABIN2844109) western blot analysis in A549 cell line lysates (35 µg/lane). This demonstrates the C1orf51 antibody detected the C1orf51 protein (arrow).



#### Immunohistochemistry (Paraffin-embedded Sections)

**Image 3.** C1orf51 antibody (N-term) (ABIN654338 and ABIN2844109) immunohistochemistry analysis in formalin fixed and paraffin embedded human large intestine followed by peroxidase conjugation of the secondary antibody and DAB staining. This data demonstrates the use of the C1orf51 antibody (N-term) for immunohistochemistry. Clinical relevance has not been evaluated.