

Datasheet for ABIN654341
anti-MRM1 antibody (N-Term)

3 Images

[Go to Product page](#)

Overview

Quantity:	400 µL
Target:	MRM1
Binding Specificity:	AA 80-109, N-Term
Reactivity:	Human
Host:	Rabbit
Clonality:	Polyclonal
Conjugate:	This MRM1 antibody is un-conjugated
Application:	Western Blotting (WB), Flow Cytometry (FACS), Immunohistochemistry (Paraffin-embedded Sections) (IHC (p))

Product Details

Immunogen:	This MRM1 antibody is generated from rabbits immunized with a KLH conjugated synthetic peptide between 80-109 amino acids from the N-terminal region of human MRM1.
Clone:	RB28066
Isotype:	Ig Fraction
Purification:	This antibody is purified through a protein A column, followed by peptide affinity purification.

Target Details

Target:	MRM1
Alternative Name:	MRM1 (MRM1 Products)

Target Details

Molecular Weight:	38638
Gene ID:	79922
NCBI Accession:	NP_079140
UniProt:	Q6IN84

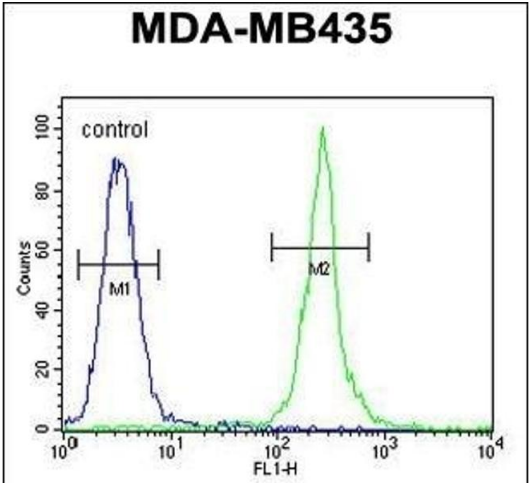
Application Details

Application Notes:	WB: 1:1000. IHC-P: 1:50~100. FC: 1:10~50
Restrictions:	For Research Use only

Handling

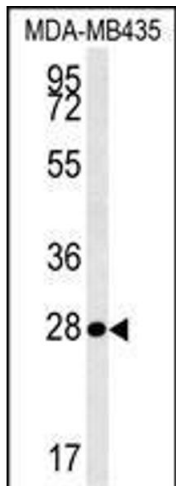
Format:	Liquid
Buffer:	Purified polyclonal antibody supplied in PBS with 0.09 % (W/V) sodium azide.
Preservative:	Sodium azide
Precaution of Use:	This product contains Sodium azide: a POISONOUS AND HAZARDOUS SUBSTANCE which should be handled by trained staff only.
Storage:	4 °C,-20 °C
Storage Comment:	Maintain refrigerated at 2-8 °C for up to 6 months. For long term storage store at -20 °C in small aliquots to prevent freeze-thaw cycles.
Expiry Date:	6 months

Images



Flow Cytometry

Image 1. MRM1 Antibody (N-term) (ABIN654341 and ABIN2844111) flow cytometric analysis of MDA-M cells (right histogram) compared to a negative control cell (left histogram). FITC-conjugated goat-anti-rabbit secondary antibodies were used for the analysis.



Western Blotting

Image 2. MRM1 Antibody (N-term) (ABIN654341 and ABIN2844111) western blot analysis in MDA-M cell line lysates (35 µg/lane). This demonstrates the MRM1 antibody detected the MRM1 protein (arrow).



Immunohistochemistry (Paraffin-embedded Sections)

Image 3. MRM1 antibody (N-term) (ABIN654341 and ABIN2844111) immunohistochemistry analysis in formalin fixed and paraffin embedded human skeletal muscle followed by peroxidase conjugation of the secondary antibody and DAB staining. This data demonstrates the use of the MRM1 antibody (N-term) for immunohistochemistry. Clinical relevance has not been evaluated.