

Datasheet for ABIN654348  
**anti-AP1S3 antibody (N-Term)**

## 2 Images

[Go to Product page](#)

## Overview

Quantity:	400 µL
Target:	AP1S3
Binding Specificity:	AA 8-37, N-Term
Reactivity:	Human, Mouse
Host:	Rabbit
Clonality:	Polyclonal
Conjugate:	This AP1S3 antibody is un-conjugated
Application:	Western Blotting (WB), Immunohistochemistry (Paraffin-embedded Sections) (IHC (p))

## Product Details

Immunogen:	This AP1S3 antibody is generated from rabbits immunized with a KLH conjugated synthetic peptide between 8-37 amino acids from the N-terminal region of human AP1S3.
Clone:	RB28083
Isotype:	Ig Fraction
Purification:	This antibody is purified through a protein A column, followed by peptide affinity purification.

## Target Details

Target:	AP1S3
Alternative Name:	AP1S3 ( <a href="#">AP1S3 Products</a> )
Molecular Weight:	18280

## Target Details

Gene ID:	130340
NCBI Accession:	<a href="#">NP_001034658</a>
UniProt:	<a href="#">Q96PC3</a>

## Application Details

Application Notes:	WB: 1:1000. IHC-P: 1:50~100
Restrictions:	For Research Use only

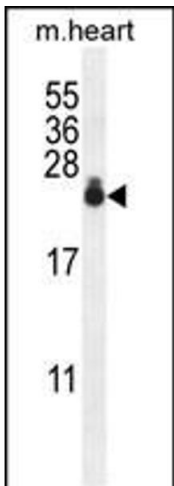
## Handling

Format:	Liquid
Buffer:	Purified polyclonal antibody supplied in PBS with 0.09 % (W/V) sodium azide.
Preservative:	Sodium azide
Precaution of Use:	This product contains Sodium azide: a POISONOUS AND HAZARDOUS SUBSTANCE which should be handled by trained staff only.
Storage:	4 °C,-20 °C
Storage Comment:	Maintain refrigerated at 2-8 °C for up to 6 months. For long term storage store at -20 °C in small aliquots to prevent freeze-thaw cycles.
Expiry Date:	6 months

## Images



Immunohistochemistry (Paraffin-embedded Sections)				
Image	1.	S3	antibody (N-term)	0390a
immunohistochemistry analysis in formalin fixed and paraffin embedded human skeletal muscle followed by peroxidase conjugation of the secondary antibody and DAB staining. This data demonstrates the use of the S3 antibody (N-term) for immunohistochemistry. Clinical relevance has not been evaluated.				



Western Blotting

**Image 2.** S3 Antibody (N-term) 0390a western blot analysis in mouse heart tissue lysates (35 µg/lane). This demonstrates the S3 antibody detected the S3 protein (arrow).