



Datasheet for ABIN654352  
**anti-FAM46A antibody (AA 89-117)**



[Go to Product page](#)

2 Images

Overview

Quantity:	400 µL
Target:	FAM46A
Binding Specificity:	AA 89-117
Reactivity:	Human
Host:	Rabbit
Clonality:	Polyclonal
Conjugate:	This FAM46A antibody is un-conjugated
Application:	Western Blotting (WB), Immunohistochemistry (Paraffin-embedded Sections) (IHC (p))

Product Details

Immunogen:	This FAM46A antibody is generated from rabbits immunized with a KLH conjugated synthetic peptide between 89-117 amino acids from the Central region of human FAM46A.
Clone:	RB28091
Isotype:	Ig Fraction
Purification:	This antibody is purified through a protein A column, followed by peptide affinity purification.

Target Details

Target:	FAM46A
Alternative Name:	FAM46A ( <a href="#">FAM46A Products</a> )
Molecular Weight:	49666

## Target Details

Gene ID: 55603

NCBI Accession: [NP\\_060103](#)

UniProt: [Q96IP4](#)

## Application Details

Application Notes: WB: 1:1000. IHC-P: 1:10~50

Restrictions: For Research Use only

## Handling

Format: Liquid

Buffer: Purified polyclonal antibody supplied in PBS with 0.09 % (W/V) sodium azide.

Preservative: Sodium azide

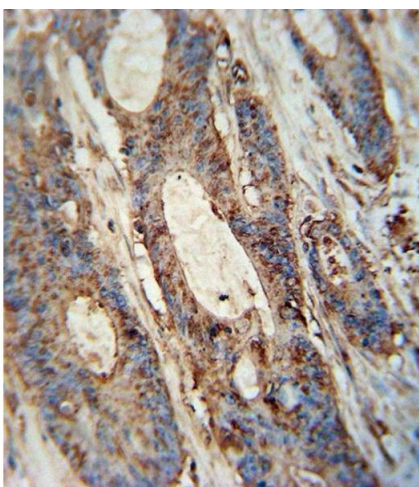
Precaution of Use: This product contains Sodium azide: a POISONOUS AND HAZARDOUS SUBSTANCE which should be handled by trained staff only.

Storage: 4 °C,-20 °C

Storage Comment: Maintain refrigerated at 2-8 °C for up to 6 months. For long term storage store at -20 °C in small aliquots to prevent freeze-thaw cycles.

Expiry Date: 6 months

## Images



### Immunohistochemistry (Paraffin-embedded Sections)

**Image 1.** FA antibody (Center) (ABIN654352 and ABIN2844119) immunohistochemistry analysis in formalin fixed and paraffin embedded human colon carcinoma followed by peroxidase conjugation of the secondary antibody and DAB staining. This data demonstrates the use of the FA antibody (Center) for immunohistochemistry. Clinical relevance has not been evaluated.



### Western Blotting

**Image 2.** FA Antibody (Center) (ABIN654352 and ABIN2844119) western blot analysis in CEM cell line lysates (35 µg/lane). This demonstrates the FA antibody detected the FA protein (arrow).