

Datasheet for ABIN654358
anti-Lcor antibody (C-Term)[Go to Product page](#)

1 Image

Overview

Quantity:	400 µL
Target:	Lcor
Binding Specificity:	AA 322-350, C-Term
Reactivity:	Human
Host:	Rabbit
Clonality:	Polyclonal
Conjugate:	This Lcor antibody is un-conjugated
Application:	Western Blotting (WB)

Product Details

Immunogen:	This LCOR antibody is generated from rabbits immunized with a KLH conjugated synthetic peptide between 322-350 amino acids from the C-terminal region of human LCOR.
Clone:	RB28105
Isotype:	Ig Fraction
Predicted Reactivity:	M
Purification:	This antibody is purified through a protein A column, followed by peptide affinity purification.

Target Details

Target:	Lcor
Alternative Name:	LCOR (Lcor Products)

Target Details

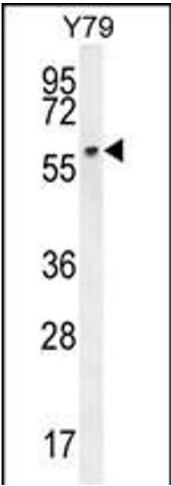
Background:	LCOR is a transcriptional corepressor widely expressed in fetal and adult tissues that is recruited to agonist-bound nuclear receptors through a single LxxLL motif, also referred to as a nuclear receptor (NR) box (Fernandes et al., 2003 [PubMed 12535528]).
Molecular Weight:	47007
Gene ID:	84458
NCBI Accession:	NP_001164236 , NP_001164237 , NP_115816
UniProt:	Q96JN0

Application Details

Application Notes:	WB: 1:1000
Restrictions:	For Research Use only

Handling

Format:	Liquid
Buffer:	Purified polyclonal antibody supplied in PBS with 0.09 % (W/V) sodium azide.
Preservative:	Sodium azide
Precaution of Use:	This product contains Sodium azide: a POISONOUS AND HAZARDOUS SUBSTANCE which should be handled by trained staff only.
Storage:	4 °C, -20 °C
Storage Comment:	Maintain refrigerated at 2-8 °C for up to 6 months. For long term storage store at -20 °C in small aliquots to prevent freeze-thaw cycles.
Expiry Date:	6 months



Western Blotting

Image 1. LCOR Antibody (C-term) (ABIN654358 and ABIN2844122) western blot analysis in Y79 cell line lysates (35 µg/lane). This demonstrates the LCOR antibody detected the LCOR protein (arrow).