



[Go to Product page](#)

Datasheet for ABIN654373
anti-LHFPL5 antibody (C-Term)

1 Image

Overview

Quantity:	400 µL
Target:	LHFPL5
Binding Specificity:	AA 186-214, C-Term
Reactivity:	Human, Mouse
Host:	Rabbit
Clonality:	Polyclonal
Conjugate:	This LHFPL5 antibody is un-conjugated
Application:	Western Blotting (WB)

Product Details

Immunogen:	This LHFPL5 antibody is generated from rabbits immunized with a KLH conjugated synthetic peptide between 186-214 amino acids from the C-terminal region of human LHFPL5.
Clone:	RB28242
Isotype:	Ig Fraction
Predicted Reactivity:	Rat
Purification:	This antibody is purified through a protein A column, followed by peptide affinity purification.

Target Details

Target:	LHFPL5
Alternative Name:	LHFPL5 (LHFPL5 Products)

Target Details

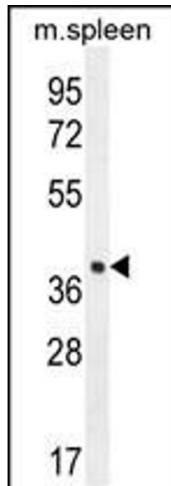
Background:	This gene is a member of the lipoma HMGIC fusion partner (LHFP) gene family, which is a subset of the superfamily of tetraspan transmembrane protein encoding genes. Mutations in this gene result in deafness in humans, and a mutation in a similar gene in mice results in deafness and vestibular dysfunction with severe degeneration of the organ of Corti. It is proposed to function in hair bundle morphogenesis.
Molecular Weight:	24201
Gene ID:	222662
NCBI Accession:	NP_872354
UniProt:	Q8TAF8
Pathways:	Sensory Perception of Sound

Application Details

Application Notes:	WB: 1:1000
Restrictions:	For Research Use only

Handling

Format:	Liquid
Buffer:	Purified polyclonal antibody supplied in PBS with 0.09 % (W/V) sodium azide.
Preservative:	Sodium azide
Precaution of Use:	This product contains Sodium azide: a POISONOUS AND HAZARDOUS SUBSTANCE which should be handled by trained staff only.
Storage:	4 °C, -20 °C
Storage Comment:	Maintain refrigerated at 2-8 °C for up to 6 months. For long term storage store at -20 °C in small aliquots to prevent freeze-thaw cycles.
Expiry Date:	6 months



Western Blotting

Image 1. LHFPL5 Antibody (C-term) (ABIN654373 and ABIN2844128) western blot analysis in mouse spleen tissue lysates (35 µg/lane). This demonstrates the LHFPL5 antibody detected the LHFPL5 protein (arrow).