

Datasheet for ABIN654375
anti-Nephrin antibody (Tyr1210)

4 Images

[Go to Product page](#)

Overview

Quantity:	400 µL
Target:	Nephrin (NPHS1)
Binding Specificity:	AA 1191-1219, Tyr1210
Reactivity:	Human, Mouse
Host:	Rabbit
Clonality:	Polyclonal
Conjugate:	This Nephrin antibody is un-conjugated
Application:	Western Blotting (WB), Flow Cytometry (FACS)

Product Details

Immunogen:	This Nephrin antibody is generated from rabbits immunized with a KLH conjugated synthetic peptide between 1191-1219 amino acids from human Nephrin.
Clone:	RB28264
Isotype:	Ig Fraction
Purification:	This antibody is purified through a protein A column, followed by peptide affinity purification.

Target Details

Target:	Nephrin (NPHS1)
Alternative Name:	Nephrin (NPHS1 Products)
Background:	This gene encodes a member of the immunoglobulin family of cell adhesion molecules that

Target Details

functions in the glomerular filtration barrier in the kidney. The gene is primarily expressed in renal tissues, and the protein is a type-1 transmembrane protein found at the slit diaphragm of glomerular podocytes. The slit diaphragm is thought to function as an ultrafilter to exclude albumin and other plasma macromolecules in the formation of urine. Mutations in this gene result in Finnish-type congenital nephrosis 1, characterized by severe proteinuria and loss of the slit diaphragm and foot processes.

Molecular Weight: 134742

Gene ID: 4868

NCBI Accession: [NP_004637](#)

UniProt: [O60500](#)

Pathways: [Regulation of Actin Filament Polymerization](#), [Skeletal Muscle Fiber Development](#)

Application Details

Application Notes: WB: 1:1000. WB: 1:1000. WB: 1:2000. FC: 1:10~50

Restrictions: For Research Use only

Handling

Format: Liquid

Buffer: Purified polyclonal antibody supplied in PBS with 0.09 % (W/V) sodium azide.

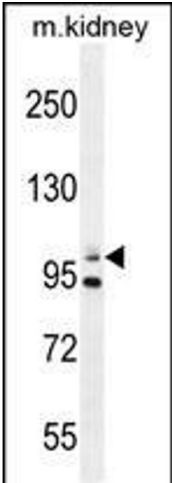
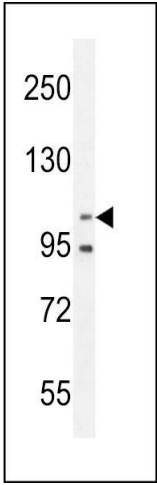
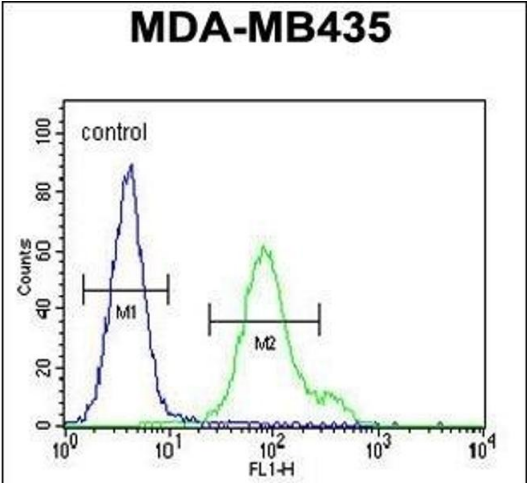
Preservative: Sodium azide

Precaution of Use: This product contains Sodium azide: a POISONOUS AND HAZARDOUS SUBSTANCE which should be handled by trained staff only.

Storage: 4 °C,-20 °C

Storage Comment: Maintain refrigerated at 2-8 °C for up to 6 months. For long term storage store at -20 °C in small aliquots to prevent freeze-thaw cycles.

Expiry Date: 6 months



Flow Cytometry

Image 1. Nephrin Antibody (ABIN654375 and ABIN2844129) flow cytometric analysis of MDA-M cells (right histogram) compared to a negative control cell (left histogram). FITC-conjugated goat-anti-rabbit secondary antibodies were used for the analysis.

Western Blotting

Image 2. Nephrin antibody (ABIN654375 and ABIN2844129) western blot analysis in MDA-M cell line lysates (35 μ g/lane). This demonstrates the Nephrin antibody detected the Nephrin protein (arrow).

Western Blotting

Image 3. Nephrin antibody (ABIN654375 and ABIN2844129) western blot analysis in mouse kidney tissue lysates (35 μ g/lane). This demonstrates the Nephrin antibody detected the Nephrin protein (arrow).

Please check the [product details page](#) for more images. Overall 4 images are available for ABIN654375.