



[Go to Product page](#)

Datasheet for ABIN654385

## anti-SHISAL1/KIAA1644 antibody (N-Term)

### 2 Images

#### Overview

Quantity:	400 µL
Target:	SHISAL1/KIAA1644 (SHISAL1)
Binding Specificity:	AA 18-46, N-Term
Reactivity:	Human, Mouse
Host:	Rabbit
Clonality:	Polyclonal
Conjugate:	This SHISAL1/KIAA1644 antibody is un-conjugated
Application:	Western Blotting (WB), Immunohistochemistry (Paraffin-embedded Sections) (IHC (p))

#### Product Details

Immunogen:	This KIAA1644 antibody is generated from rabbits immunized with a KLH conjugated synthetic peptide between 18-46 amino acids from the N-terminal region of human KIAA1644.
Clone:	RB28300
Isotype:	Ig Fraction
Purification:	This antibody is purified through a protein A column, followed by peptide affinity purification.

#### Target Details

Target:	SHISAL1/KIAA1644 (SHISAL1)
Alternative Name:	KIAA1644 ( <a href="#">SHISAL1 Products</a> )
Molecular Weight:	22573

## Target Details

Gene ID: 85352

NCBI Accession: [NP\\_001092764](#)

UniProt: [Q3SXP7](#)

## Application Details

Application Notes: WB: 1:1000. IHC-P: 1:50~100

Restrictions: For Research Use only

## Handling

Format: Liquid

Buffer: Purified polyclonal antibody supplied in PBS with 0.09 % (W/V) sodium azide.

Preservative: Sodium azide

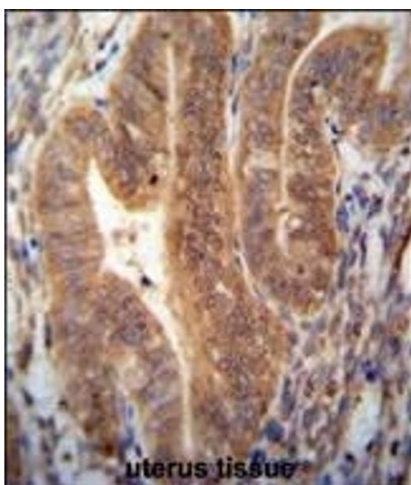
Precaution of Use: This product contains Sodium azide: a POISONOUS AND HAZARDOUS SUBSTANCE which should be handled by trained staff only.

Storage: 4 °C, -20 °C

Storage Comment: Maintain refrigerated at 2-8 °C for up to 6 months. For long term storage store at -20 °C in small aliquots to prevent freeze-thaw cycles.

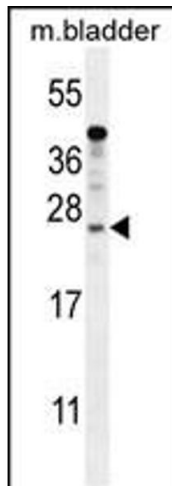
Expiry Date: 6 months

## Images



### Immunohistochemistry (Paraffin-embedded Sections)

**Image 1.** KI antibody (N-term) (ABIN654385 and ABIN2844131) immunohistochemistry analysis in formalin fixed and paraffin embedded human uterus tissue followed by peroxidase conjugation of the secondary antibody and DAB staining. This data demonstrates the use of the KI antibody (N-term) for immunohistochemistry. Clinical relevance has not been evaluated.



### Western Blotting

**Image 2.** KI Antibody (N-term) (ABIN654385 and ABIN2844131) western blot analysis in mouse bladder tissue lysates (35 µg/lane). This demonstrates the KI antibody detected the KI protein (arrow).