



## Datasheet for ABIN654395 **anti-PHTF2 antibody (AA 420-448)**



[Go to Product page](#)

### 1 Image

#### Overview

Quantity:	400 µL
Target:	PHTF2
Binding Specificity:	AA 420-448
Reactivity:	Human, Mouse
Host:	Rabbit
Clonality:	Polyclonal
Conjugate:	This PHTF2 antibody is un-conjugated
Application:	Western Blotting (WB)

#### Product Details

Immunogen:	This PHTF2 antibody is generated from rabbits immunized with a KLH conjugated synthetic peptide between 420-448 amino acids from the Central region of human PHTF2.
Clone:	RB30100
Isotype:	Ig Fraction
Predicted Reactivity:	C
Purification:	This antibody is purified through a protein A column, followed by peptide affinity purification.

#### Target Details

Target:	PHTF2
Alternative Name:	PHTF2 ( <a href="#">PHTF2 Products</a> )

## Target Details

Molecular Weight:	88757
Gene ID:	57157
NCBI Accession:	<a href="#">NP_001120829</a> , <a href="#">NP_001120830</a> , <a href="#">NP_001120831</a> , <a href="#">NP_001120832</a> , <a href="#">NP_065165</a>
UniProt:	<a href="#">Q8N3S3</a>

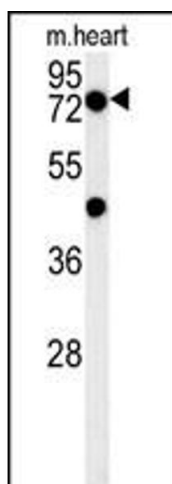
## Application Details

Application Notes:	WB: 1:1000
Restrictions:	For Research Use only

## Handling

Format:	Liquid
Buffer:	Purified polyclonal antibody supplied in PBS with 0.09 % (W/V) sodium azide.
Preservative:	Sodium azide
Precaution of Use:	This product contains Sodium azide: a POISONOUS AND HAZARDOUS SUBSTANCE which should be handled by trained staff only.
Storage:	4 °C, -20 °C
Storage Comment:	Maintain refrigerated at 2-8 °C for up to 6 months. For long term storage store at -20 °C in small aliquots to prevent freeze-thaw cycles.
Expiry Date:	6 months

## Images



### Western Blotting

**Image 1.** PHTF2 Antibody (Center) (ABIN654395 and ABIN2844137) western blot analysis in mouse heart tissue lysates (15 µg/lane). This demonstrates the PHTF2 antibody detected PHTF2 protein (arrow).