



[Go to Product page](#)

Datasheet for ABIN654396
anti-CCDC19 antibody (N-Term)

2 Images

Overview

Quantity:	400 µL
Target:	CCDC19
Binding Specificity:	AA 106-135, N-Term
Reactivity:	Human
Host:	Rabbit
Clonality:	Polyclonal
Conjugate:	This CCDC19 antibody is un-conjugated
Application:	Western Blotting (WB), Immunohistochemistry (Paraffin-embedded Sections) (IHC (p))

Product Details

Immunogen:	This CCDC19 antibody is generated from rabbits immunized with a KLH conjugated synthetic peptide between 106-135 amino acids from the N-terminal region of human CCDC19.
Clone:	RB30101
Isotype:	Ig Fraction
Purification:	This antibody is purified through a protein A column, followed by peptide affinity purification.

Target Details

Target:	CCDC19
Alternative Name:	CCDC19 (CCDC19 Products)
Molecular Weight:	65730

Target Details

Gene ID: 25790

NCBI Accession: [NP_036469](#)

UniProt: [Q9UL16](#)

Application Details

Application Notes: WB: 1:1000. IHC-P: 1:50~100

Restrictions: For Research Use only

Handling

Format: Liquid

Buffer: Purified polyclonal antibody supplied in PBS with 0.09 % (W/V) sodium azide.

Preservative: Sodium azide

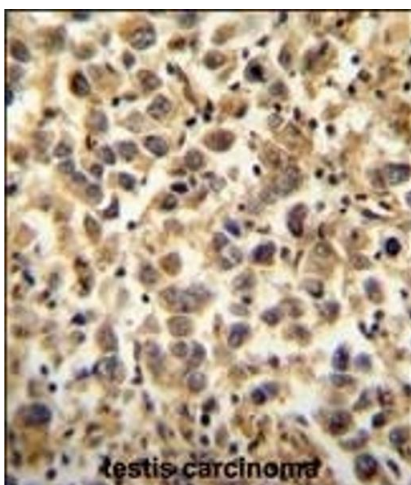
Precaution of Use: This product contains Sodium azide: a POISONOUS AND HAZARDOUS SUBSTANCE which should be handled by trained staff only.

Storage: 4 °C,-20 °C

Storage Comment: Maintain refrigerated at 2-8 °C for up to 6 months. For long term storage store at -20 °C in small aliquots to prevent freeze-thaw cycles.

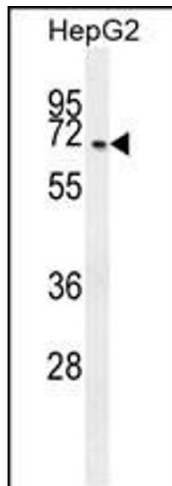
Expiry Date: 6 months

Images



Immunohistochemistry (Paraffin-embedded Sections)

Image 1. CCDC19 Antibody (N-term) (ABIN654396 and ABIN2844138) immunohistochemistry analysis in formalin fixed and paraffin embedded human testis carcinoma followed by peroxidase conjugation of the secondary antibody and DAB staining. This data demonstrates the use of the CCDC19 Antibody (N-term) for immunohistochemistry. Clinical relevance has not been evaluated.



Western Blotting

Image 2. CCDC19 Antibody (N-term) (ABIN654396 and ABIN2844138) western blot analysis in HepG2 cell line lysates (35 µg/lane). This demonstrates the CCDC19 antibody detected the CCDC19 protein (arrow).