

Datasheet for ABIN654398
anti-SCXA antibody (C-Term)



[Go to Product page](#)

2 Images

2 Publications

Overview

Quantity:	200 µL
Target:	SCXA
Binding Specificity:	AA 172-201, C-Term
Reactivity:	Human, Mouse
Host:	Rabbit
Clonality:	Polyclonal
Conjugate:	This SCXA antibody is un-conjugated
Application:	Western Blotting (WB), Immunohistochemistry (Paraffin-embedded Sections) (IHC (p))

Product Details

Immunogen:	This SCXA antibody is generated from rabbits immunized with a KLH conjugated synthetic peptide between 172-201 amino acids from the C-terminal region of human SCXA.
Clone:	RB30107
Isotype:	Ig Fraction
Predicted Reactivity:	C
Purification:	This antibody is purified through a protein A column, followed by peptide affinity purification.

Target Details

Target:	SCXA
Alternative Name:	SCXA (SCXA Products)

Target Details

Gene ID: 100129885, 642658

NCBI Accession: [NP_001008272, NP_001073983](#)

UniProt: [Q7RTU7](#)

Application Details

Application Notes: WB: 1:1000. IHC-P: 1:100

Restrictions: For Research Use only

Handling

Format: Liquid

Buffer: Purified polyclonal antibody supplied in PBS with 0.09 % (W/V) sodium azide.

Preservative: Sodium azide

Precaution of Use: This product contains Sodium azide: a POISONOUS AND HAZARDOUS SUBSTANCE which should be handled by trained staff only.

Handling Advice: Avoid freeze-thaw cycles.

Storage: 4 °C, -20 °C

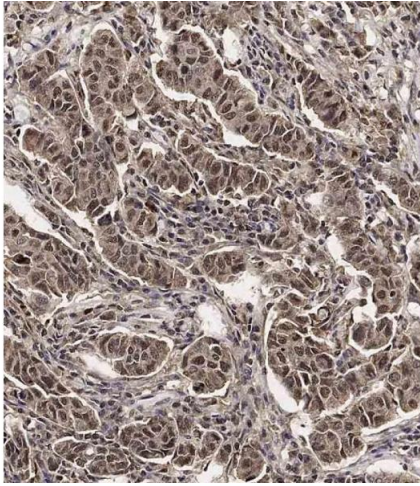
Storage Comment: Maintain refrigerated at 2-8 °C for up to 6 months. For long term storage store at -20 °C in small aliquots.

Expiry Date: 6 months

Publications

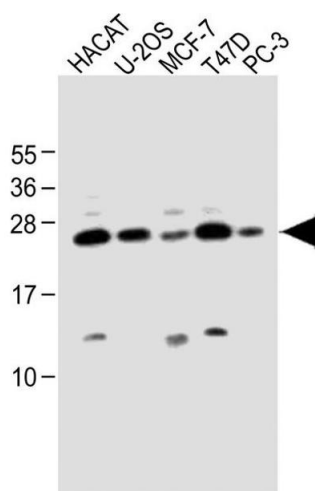
Product cited in: Webb, GabreLOW, Pierce, Gibb, Elliott: "Retinoic acid receptor signaling preserves tendon stem cell characteristics and prevents spontaneous differentiation in vitro." in: **Stem cell research & therapy**, Vol. 7, pp. 45, (2016) ([PubMed](#)).

Alberton, Popov, Prägert, Kohler, Shukunami, Schieker, Docheva: "Conversion of human bone marrow-derived mesenchymal stem cells into tendon progenitor cells by ectopic expression of scleraxis." in: **Stem cells and development**, Vol. 21, Issue 6, pp. 846-58, (2012) ([PubMed](#)).



Immunohistochemistry (Paraffin-embedded Sections)

Image 1. Immunohistochemical analysis of (ABIN654398 and ABIN2844139) on paraffin-embedded Human breast carcinoma tissue. Tissue was fixed with formaldehyde at room temperature. Heat induced epitope retrieval was performed by EDTA buffer (pH 9.0). Samples were incubated with primary Antibody (1:100) for 1 hour at room temperature. Undiluted CRF Anti-Polyvalent HRP Polymer antibody was used as the secondary antibody.



Western Blotting

Image 2. All lanes : Anti-SCXA Antibody (C-term) at 1:1000 dilution Lane 1: HACAT whole cell lysate Lane 2: U-2OS whole cell lysate Lane 3: MCF-7 whole cell lysate Lane 4: T47D whole cell lysate Lane 5: PC-3 whole cell lysate Lysates/proteins at 20 µg per lane. Secondary Goat Anti-Rabbit IgG, (H+L), Peroxidase conjugated at 1/10000 dilution. Predicted band size : 22 kDa Blocking/Dilution buffer: 5 % NFDm/TBST.