

Datasheet for ABIN654415
anti-PAX1 antibody (C-Term)

2 Images

[Go to Product page](#)

Overview

Quantity:	400 µL
Target:	PAX1
Binding Specificity:	AA 443-471, C-Term
Reactivity:	Human
Host:	Rabbit
Clonality:	Polyclonal
Conjugate:	This PAX1 antibody is un-conjugated
Application:	Western Blotting (WB), Flow Cytometry (FACS)

Product Details

Immunogen:	This PAX1 antibody is generated from rabbits immunized with a KLH conjugated synthetic peptide between 443-471 amino acids from the C-terminal region of human PAX1.
Clone:	RB20214
Isotype:	Ig Fraction
Purification:	This antibody is purified through a protein A column, followed by peptide affinity purification.

Target Details

Target:	PAX1
Alternative Name:	PAX1 (PAX1 Products)
Background:	The PAX genes, including PAX1, are a highly conserved family of developmental control genes

Target Details

that encode transcription factors and have been shown to play a role in pattern formation during embryogenesis in vertebrates (McGaughran et al., 2003 [PubMed 12774041]). See PAX7 (MIM 167410) for a discussion of paired box domain genes.

Molecular Weight: 55499

Gene ID: 5075

NCBI Accession: [NP_006183](#)

UniProt: [P15863](#)

Application Details

Application Notes: WB: 1:1000. FC: 1:10~50

Restrictions: For Research Use only

Handling

Format: Liquid

Buffer: Purified polyclonal antibody supplied in PBS with 0.09 % (W/V) sodium azide.

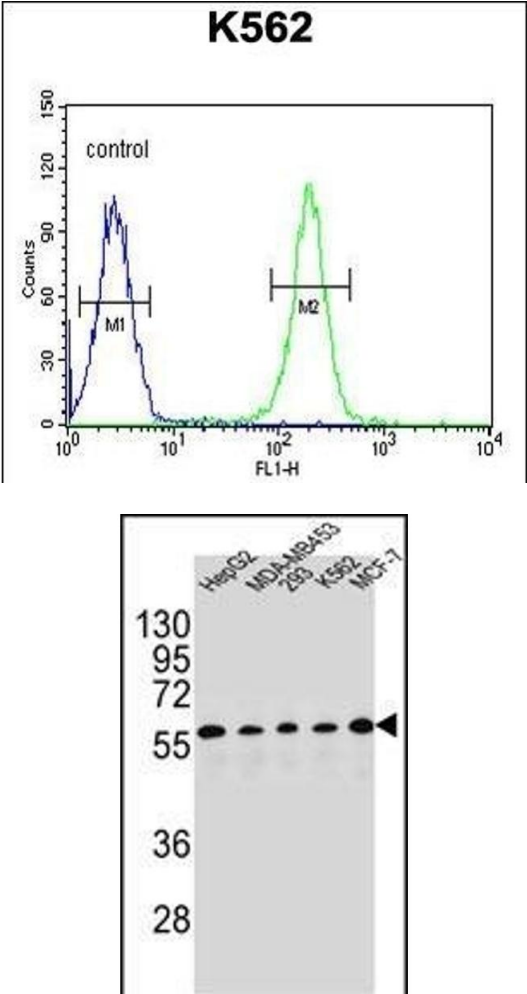
Preservative: Sodium azide

Precaution of Use: This product contains Sodium azide: a POISONOUS AND HAZARDOUS SUBSTANCE which should be handled by trained staff only.

Storage: 4 °C, -20 °C

Storage Comment: Maintain refrigerated at 2-8 °C for up to 6 months. For long term storage store at -20 °C in small aliquots to prevent freeze-thaw cycles.

Expiry Date: 6 months



Flow Cytometry

Image 1. X1 Antibody (C-term) (ABIN654415 and ABIN2844152) flow cytometric analysis of K562 cells (right histogram) compared to a negative control cell (left histogram). FITC-conjugated goat-anti-rabbit secondary antibodies were used for the analysis.

Western Blotting

Image 2. X1 Antibody (C-term) (ABIN654415 and ABIN2844152) western blot analysis in HepG2, MDA-M, 293, K562, MCF-7 cell line lysates (35 µg/lane). This demonstrates the X1 antibody detected the X1 protein (arrow).