



[Go to Product page](#)

Datasheet for ABIN654417

anti-RABGAP1 antibody (N-Term)

2 Images

Overview

Quantity:	400 µL
Target:	RABGAP1
Binding Specificity:	AA 14-43, N-Term
Reactivity:	Human
Host:	Rabbit
Clonality:	Polyclonal
Conjugate:	This RABGAP1 antibody is un-conjugated
Application:	Western Blotting (WB), Flow Cytometry (FACS)

Product Details

Immunogen:	This RABGAP1 antibody is generated from rabbits immunized with a KLH conjugated synthetic peptide between 14-43 amino acids from the N-terminal region of human RABGAP1.
Clone:	RB28069
Isotype:	Ig Fraction
Predicted Reactivity:	M
Purification:	This antibody is purified through a protein A column, followed by peptide affinity purification.

Target Details

Target:	RABGAP1
Alternative Name:	RABGAP1 (RABGAP1 Products)

Target Details

Background: RABGAP1 may act as a GTPase-activating protein of RAB6A and play a role in microtubule nucleation by centrosome. It may participate in a RAB6A-mediated pathway involved in the metaphase-anaphase transition.

Molecular Weight: 121737

Gene ID: 23637

NCBI Accession: [NP_036329](#)

UniProt: [Q9Y3P9](#)

Application Details

Application Notes: WB: 1:1000. FC: 1:10~50

Restrictions: For Research Use only

Handling

Format: Liquid

Buffer: Purified polyclonal antibody supplied in PBS with 0.09 % (W/V) sodium azide.

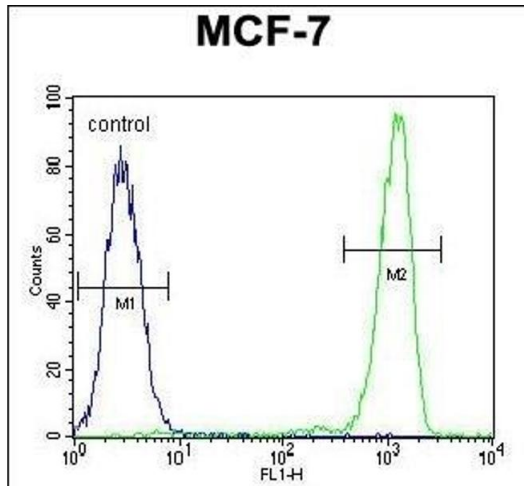
Preservative: Sodium azide

Precaution of Use: This product contains Sodium azide: a POISONOUS AND HAZARDOUS SUBSTANCE which should be handled by trained staff only.

Storage: 4 °C, -20 °C

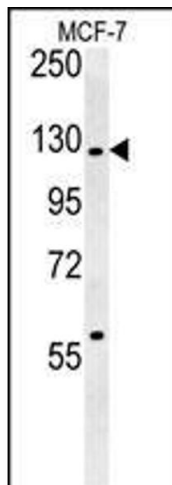
Storage Comment: Maintain refrigerated at 2-8 °C for up to 6 months. For long term storage store at -20 °C in small aliquots to prevent freeze-thaw cycles.

Expiry Date: 6 months



Flow Cytometry

Image 1. RABG Antibody (N-term) 0460a flow cytometric analysis of MCF-7 cells (right histogram) compared to a negative control cell (left histogram). FITC-conjugated goat-anti-rabbit secondary antibodies were used for the analysis.



Western Blotting

Image 2. RABG Antibody (N-term) 0460a western blot analysis in MCF-7 cell line lysates (35 µg/lane). This demonstrates the RABG antibody detected the RABG protein (arrow).