

Datasheet for ABIN654421

anti-LILRA2 antibody (AA 55-81)[Go to Product page](#)**2** Images

Overview

Quantity:	400 µL
Target:	LILRA2
Binding Specificity:	AA 55-81
Reactivity:	Human
Host:	Rabbit
Clonality:	Polyclonal
Conjugate:	This LILRA2 antibody is un-conjugated
Application:	Western Blotting (WB), Flow Cytometry (FACS)

Product Details

Immunogen:	This LILRA2 antibody is generated from rabbits immunized with a KLH conjugated synthetic peptide between 55-81 amino acids from the Central region of human LILRA2.
Clone:	RB27752
Isotype:	Ig Fraction
Purification:	This antibody is purified through a protein A column, followed by peptide affinity purification.

Target Details

Target:	LILRA2
Alternative Name:	LILRA2 (LILRA2 Products)
Background:	Leukocyte Ig-like receptors (LIRs) are a family of immunoreceptors expressed predominantly

Target Details

on monocytes and B cells and at lower levels on dendritic cells and natural killer (NK) cells. All LIRs in subfamily B have an inhibitory function (see, e.g., LILRB1, MIM 604811). LIRs in subfamily A, with short cytoplasmic domains lacking an immunoreceptor tyrosine-based inhibitory motif (ITIM) and with transmembrane regions containing a charged arginine residue, may initiate stimulatory cascades. One member of subfamily A (LILRA3, MIM 604818) lacks a transmembrane region and is presumed to be a soluble receptor.

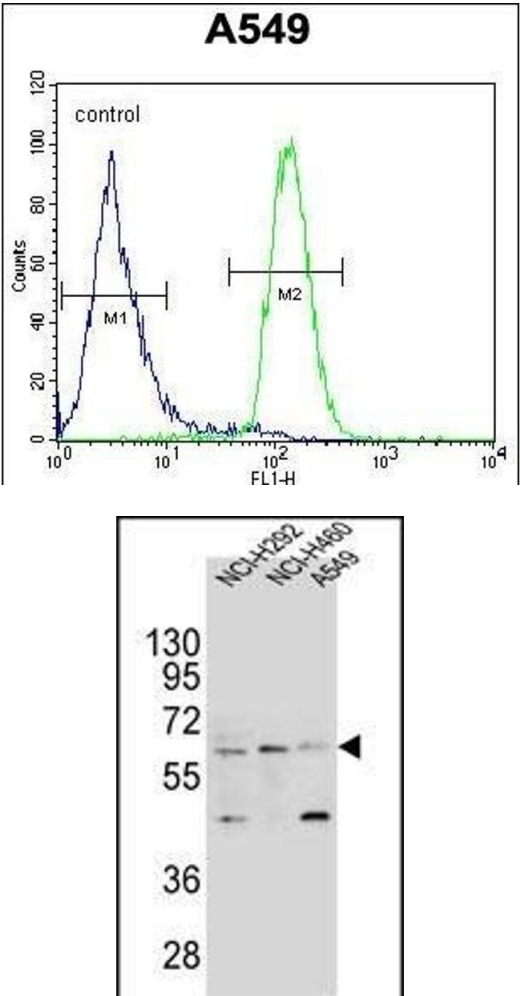
Gene ID:	11027
NCBI Accession:	NP_001124389 , NP_006857
UniProt:	Q8N149

Application Details

Application Notes:	WB: 1:1000. FC: 1:10~50
Restrictions:	For Research Use only

Handling

Format:	Liquid
Buffer:	Purified polyclonal antibody supplied in PBS with 0.09 % (W/V) sodium azide.
Preservative:	Sodium azide
Precaution of Use:	This product contains Sodium azide: a POISONOUS AND HAZARDOUS SUBSTANCE which should be handled by trained staff only.
Storage:	4 °C,-20 °C
Storage Comment:	Maintain refrigerated at 2-8 °C for up to 6 months. For long term storage store at -20 °C in small aliquots to prevent freeze-thaw cycles.
Expiry Date:	6 months



Flow Cytometry

Image 1. LILRA2 Antibody (Center) (ABIN654421 and ABIN2844156) flow cytometric analysis of A549 cells (right histogram) compared to a negative control cell (left histogram).FITC-conjugated goat-anti-rabbit secondary antibodies were used for the analysis.

Western Blotting

Image 2. LILRA2 Antibody (Center) (ABIN654421 and ABIN2844156) western blot analysis in NCI-,NCI- and A549 cell line lysates (35 µg/lane).This demonstrates the LILRA2 antibody detected the LILRA2 protein (arrow).