

Datasheet for ABIN654430  
**anti-CHIC2 antibody (C-Term)**[Go to Product page](#)

## 1 Image

## Overview

Quantity:	400 µL
Target:	CHIC2
Binding Specificity:	AA 138-165, C-Term
Reactivity:	Human, Mouse
Host:	Rabbit
Clonality:	Polyclonal
Conjugate:	This CHIC2 antibody is un-conjugated
Application:	Western Blotting (WB)

## Product Details

Immunogen:	This CHIC2 antibody is generated from rabbits immunized with a KLH conjugated synthetic peptide between 138-165 amino acids from the C-terminal region of human CHIC2.
Clone:	RB27510
Isotype:	Ig Fraction
Purification:	This antibody is purified through a protein A column, followed by peptide affinity purification.

## Target Details

Target:	CHIC2
Alternative Name:	CHIC2 ( <a href="#">CHIC2 Products</a> )
Background:	CHIC2 is a member of the CHIC family of proteins. This protein contains a cysteine-rich

## Target Details

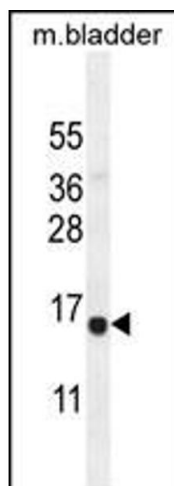
	hydrophobic (CHIC) motif, and is localized to vesicular structures and the plasma membrane.
Molecular Weight:	19254
Gene ID:	26511
NCBI Accession:	<a href="#">NP_036242</a>
UniProt:	<a href="#">Q9UKJ5</a>

## Application Details

Application Notes:	WB: 1:1000
Restrictions:	For Research Use only

## Handling

Format:	Liquid
Buffer:	Purified polyclonal antibody supplied in PBS with 0.09 % (W/V) sodium azide.
Preservative:	Sodium azide
Precaution of Use:	This product contains Sodium azide: a POISONOUS AND HAZARDOUS SUBSTANCE which should be handled by trained staff only.
Storage:	4 °C,-20 °C
Storage Comment:	Maintain refrigerated at 2-8 °C for up to 6 months. For long term storage store at -20 °C in small aliquots to prevent freeze-thaw cycles.
Expiry Date:	6 months



#### Western Blotting

**Image 1.** CHIC2 Antibody (C-term) (ABIN654430 and ABIN2844166) western blot analysis in mouse bladder tissue lysates (35 µg/lane). This demonstrates the CHIC2 antibody detected the CHIC2 protein (arrow).