

Datasheet for ABIN654431
anti-CLIC6 antibody (AA 539-565)

3 Images

[Go to Product page](#)

Overview

Quantity:	400 µL
Target:	CLIC6
Binding Specificity:	AA 539-565
Reactivity:	Human
Host:	Rabbit
Clonality:	Polyclonal
Conjugate:	This CLIC6 antibody is un-conjugated
Application:	Western Blotting (WB), Flow Cytometry (FACS), Immunohistochemistry (Paraffin-embedded Sections) (IHC (p))

Product Details

Immunogen:	This CLIC6 antibody is generated from rabbits immunized with a KLH conjugated synthetic peptide between 539-565 amino acids from the Central region of human CLIC6.
Clone:	RB23443
Isotype:	Ig Fraction
Predicted Reactivity:	M, Rat
Purification:	This antibody is purified through a protein A column, followed by peptide affinity purification.

Target Details

Target:	CLIC6
---------	-------

Target Details

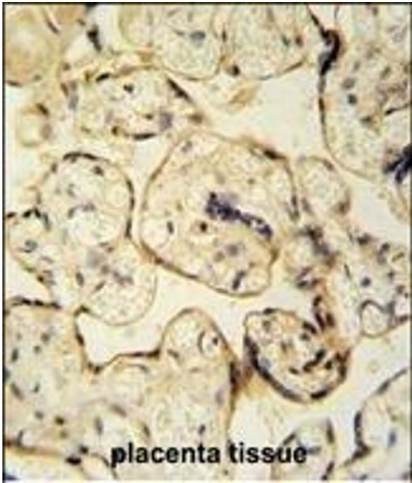
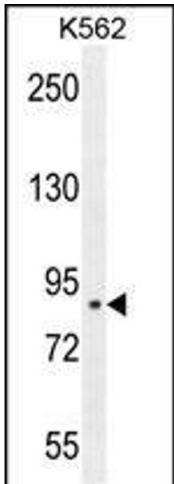
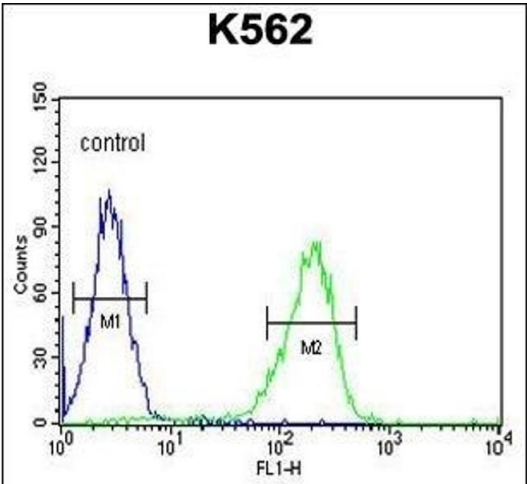
Alternative Name:	CLIC6 (CLIC6 Products)
Background:	CLIC6 is a member of the chloride intracellular channel family of proteins. The gene is part of a large triplicated region found on chromosomes 1, 6, and 21. An alternatively spliced transcript variant has been described, but its biological validity has not been determined.
Molecular Weight:	73012
Gene ID:	54102
NCBI Accession:	NP_444507
UniProt:	Q96NY7

Application Details

Application Notes:	WB: 1:1000. IHC-P: 1:50~100. FC: 1:10~50
Restrictions:	For Research Use only

Handling

Format:	Liquid
Buffer:	Purified polyclonal antibody supplied in PBS with 0.09 % (W/V) sodium azide.
Preservative:	Sodium azide
Precaution of Use:	This product contains Sodium azide: a POISONOUS AND HAZARDOUS SUBSTANCE which should be handled by trained staff only.
Storage:	4 °C,-20 °C
Storage Comment:	Maintain refrigerated at 2-8 °C for up to 6 months. For long term storage store at -20 °C in small aliquots to prevent freeze-thaw cycles.
Expiry Date:	6 months



Flow Cytometry

Image 1. CLIC6 Antibody (Center) (ABIN654431 and ABIN2844167) flow cytometric analysis of K562 cells (right histogram) compared to a negative control cell (left histogram). FITC-conjugated goat-anti-rabbit secondary antibodies were used for the analysis.

Western Blotting

Image 2. CLIC6 Antibody (Center) (ABIN654431 and ABIN2844167) western blot analysis in K562 cell line lysates (35 µg/lane). This demonstrates the CLIC6 antibody detected the CLIC6 protein (arrow).

Immunohistochemistry (Paraffin-embedded Sections)

Image 3. CLIC6 antibody (Center) (ABIN654431 and ABIN2844167) immunohistochemistry analysis in formalin fixed and paraffin embedded human placenta tissue followed by peroxidase conjugation of the secondary antibody and DAB staining. This data demonstrates the use of the CLIC6 antibody (Center) for immunohistochemistry. Clinical relevance has not been evaluated.