

Datasheet for ABIN654433
anti-CTSA antibody (N-Term)[Go to Product page](#)

6 Images

1 Publication

Overview

Quantity:	400 µL
Target:	CTSA
Binding Specificity:	AA 18-45, N-Term
Reactivity:	Human, Mouse
Host:	Rabbit
Clonality:	Polyclonal
Conjugate:	This CTSA antibody is un-conjugated
Application:	Western Blotting (WB), Immunohistochemistry (Paraffin-embedded Sections) (IHC (p))

Product Details

Immunogen:	This CTSA antibody is generated from rabbits immunized with a KLH conjugated synthetic peptide between 18-45 amino acids from the N-terminal region of human CTSA.
Clone:	RB23380
Isotype:	Ig Fraction
Purification:	This antibody is purified through a protein A column, followed by peptide affinity purification.

Target Details

Target:	CTSA
Alternative Name:	CTSA (CTSA Products)
Background:	CTSA encodes a glycoprotein which associates with lysosomal enzymes beta-galactosidase

Target Details

and neuraminidase to form a complex of high molecular weight multimers. The formation of this complex provides a protective role for stability and activity. Deficiencies in this gene are linked to multiple forms of galactosialidosis.

Molecular Weight: 54466

Gene ID: 5476

NCBI Accession: [NP_000299](#), [NP_001121167](#), [NP_001161066](#)

UniProt: [P10619](#)

Application Details

Application Notes: WB: 1:1000. WB: 1:2000. WB: 1:1000. WB: 1:1000. IHC-P-Leica: 1:500. IHC-P-Leica: 1:500

Restrictions: For Research Use only

Handling

Format: Liquid

Buffer: Purified polyclonal antibody supplied in PBS with 0.09 % (W/V) sodium azide.

Preservative: Sodium azide

Precaution of Use: This product contains Sodium azide: a POISONOUS AND HAZARDOUS SUBSTANCE which should be handled by trained staff only.

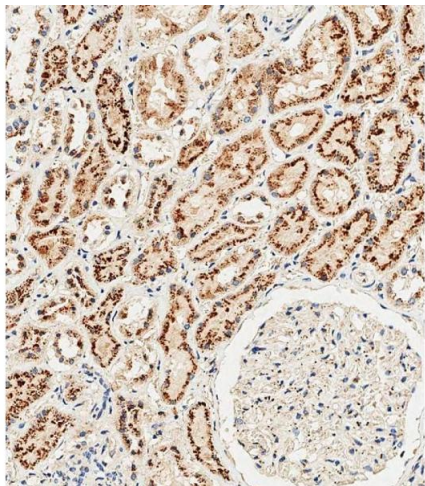
Storage: 4 °C, -20 °C

Storage Comment: Maintain refrigerated at 2-8 °C for up to 6 months. For long term storage store at -20 °C in small aliquots to prevent freeze-thaw cycles.

Expiry Date: 6 months

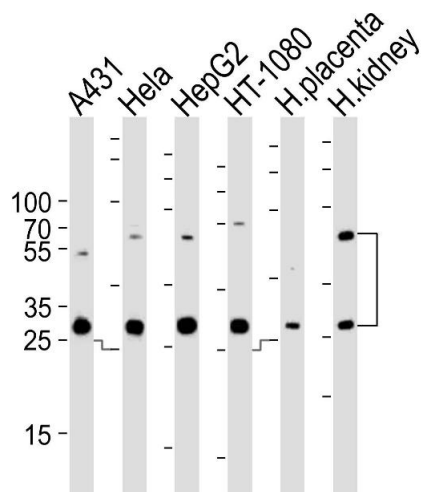
Publications

Product cited in: Wei, Cheng, Ouyang, Zhang, Hu, Chen, Wang, Lu, Zhang, Wang, Liu: "Glycoprotein screening in colorectal cancer based on differentially expressed Tn antigen." in: **Oncology reports**, Vol. 36, Issue 3, pp. 1313-24, (2017) ([PubMed](#)).



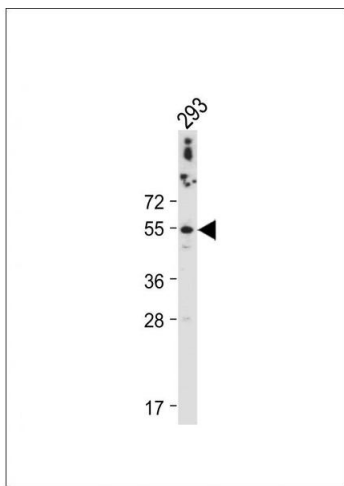
Immunohistochemistry (Paraffin-embedded Sections)

Image 1. Immunohistochemical analysis of paraffin-embedded Human kidney tissue using (ABIN654433 and ABIN2844169) performed on the Leica® BOND RXm. Tissue was fixed with formaldehyde at room temperature, antigen retrieval was by heat mediation with a EDTA buffer (pH 9.0). Samples were incubated with primary Antibody (1:500) for 1 hours at room temperature. A undiluted biotinylated CRF Anti-Polyvalent HRP Polymer antibody was used as the secondary antibody.



Western Blotting

Image 2. Western blot analysis of lysates from A431, HeLa, HepG2, HT-1080 cell line and human placenta, kidney tissue lysate (from left to right), using CTSA Antibody (N-term) (ABIN654433 and ABIN2844169). (ABIN654433 and ABIN2844169) was diluted at 1:1000 at each lane. A goat anti-rabbit IgG H&L(HRP) at 1:10000 dilution was used as the secondary antibody. Lysates at 35 µg per lane.



Western Blotting

Image 3. Anti-CTSA Antibody (N-term) at 1:2000 dilution + 293 whole cell lysate Lysates/proteins at 20 µg per lane. Secondary Goat Anti-Rabbit IgG, (H+L), Peroxidase conjugated at 1/10000 dilution. Predicted band size : 54 kDa Blocking/Dilution buffer: 5 % NFDm/TBST.

Please check the [product details page](#) for more images. Overall 6 images are available for ABIN654433.