

Datasheet for ABIN654435
anti-EXO5 antibody (AA 166-193)



[Go to Product page](#)

4 Images

Overview

| | |
|----------------------|--|
| Quantity: | 400 µL |
| Target: | EXO5 |
| Binding Specificity: | AA 166-193 |
| Reactivity: | Human, Mouse, Hamster |
| Host: | Rabbit |
| Clonality: | Polyclonal |
| Conjugate: | This EXO5 antibody is un-conjugated |
| Application: | Western Blotting (WB), Flow Cytometry (FACS) |

Product Details

| | |
|---------------|---|
| Immunogen: | This DEM1 antibody is generated from rabbits immunized with a KLH conjugated synthetic peptide between 166-193 amino acids from the Central region of human DEM1. |
| Clone: | RB28545 |
| Isotype: | Ig Fraction |
| Purification: | This antibody is purified through a protein A column, followed by peptide affinity purification. |

Target Details

| | |
|-------------------|--|
| Target: | EXO5 |
| Alternative Name: | DEM1 (EXO5 Products) |
| Molecular Weight: | 41816 |

Target Details

Gene ID: 64789

NCBI Accession: [NP_073611](#)

UniProt: [Q9H790](#)

Application Details

Application Notes: WB: 1:1000. WB: 1:1000. WB: 1:1000. FC: 1:10~50

Restrictions: For Research Use only

Handling

Format: Liquid

Buffer: Purified polyclonal antibody supplied in PBS with 0.09 % (W/V) sodium azide.

Preservative: Sodium azide

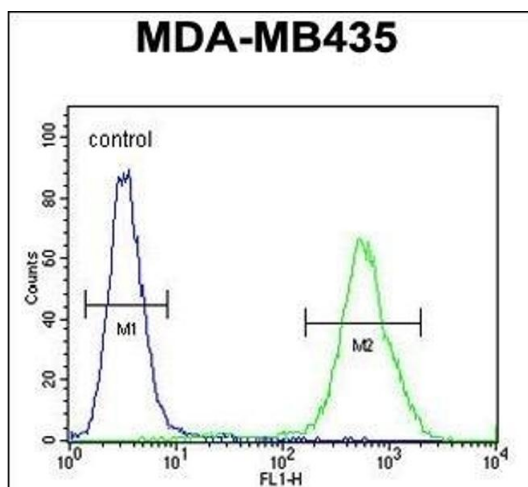
Precaution of Use: This product contains Sodium azide: a POISONOUS AND HAZARDOUS SUBSTANCE which should be handled by trained staff only.

Storage: 4 °C,-20 °C

Storage Comment: Maintain refrigerated at 2-8 °C for up to 6 months. For long term storage store at -20 °C in small aliquots to prevent freeze-thaw cycles.

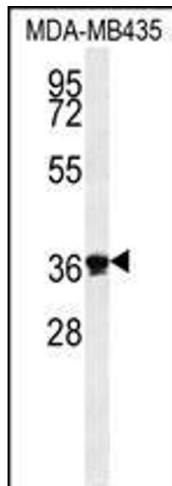
Expiry Date: 6 months

Images



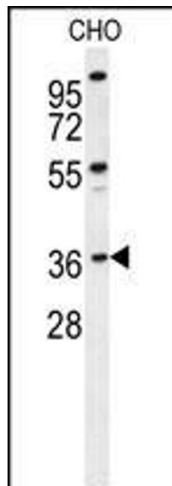
Flow Cytometry

Image 1. DEM1 Antibody (Center) (ABIN654435 and ABIN2844171) flow cytometric analysis of MDA-M cells (right histogram) compared to a negative control cell (left histogram). FITC-conjugated goat-anti-rabbit secondary antibodies were used for the analysis.



Western Blotting

Image 2. DEM1 Antibody (Center) (ABIN654435 and ABIN2844171) western blot analysis in MDA-M cell line lysates (35 µg/lane). This demonstrates the DEM1 antibody detected the DEM1 protein (arrow).



Western Blotting

Image 3. DEM1 Antibody (Center) (ABIN654435 and ABIN2844171) western blot analysis in CHO cell line lysates (35 µg/lane). This demonstrates the DEM1 antibody detected the DEM1 protein (arrow).

Please check the [product details page](#) for more images. Overall 4 images are available for ABIN654435.