

Datasheet for ABIN654438  
**anti-E2F2 antibody (AA 258-286)**[Go to Product page](#)

## 2 Images

## Overview

Quantity:	400 µL
Target:	E2F2
Binding Specificity:	AA 258-286
Reactivity:	Human, Mouse
Host:	Rabbit
Clonality:	Polyclonal
Conjugate:	This E2F2 antibody is un-conjugated
Application:	Western Blotting (WB)

## Product Details

Immunogen:	This E2F2 antibody is generated from rabbits immunized with a KLH conjugated synthetic peptide between 258-286 amino acids from the Central region of human E2F2.
Clone:	RB27633
Isotype:	Ig Fraction
Purification:	This antibody is purified through a protein A column, followed by peptide affinity purification.

## Target Details

Target:	E2F2
Alternative Name:	E2F2 ( <a href="#">E2F2 Products</a> )
Background:	E2F2 is a member of the E2F family of transcription factors. The E2F family plays a crucial role

## Target Details

in the control of cell cycle and action of tumor suppressor proteins and is also a target of the transforming proteins of small DNA tumor viruses. The E2F proteins contain several evolutionally conserved domains found in most members of the family. These domains include a DNA binding domain, a dimerization domain which determines interaction with the differentiation regulated transcription factor proteins (DP), a transactivation domain enriched in acidic amino acids, and a tumor suppressor protein association domain which is embedded within the transactivation domain. This protein and another 2 members, E2F1 and E2F3, have an additional cyclin binding domain. This protein binds specifically to retinoblastoma protein pRB in a cell-cycle dependent manner, and it exhibits overall 46 % amino acid identity to E2F1. [provided by RefSeq].

Molecular Weight: 47506

Gene ID: 1870

NCBI Accession: [NP\\_004082](#)

UniProt: [Q14209](#)

Pathways: [Cell Division Cycle](#), [Mitotic G1-G1/S Phases](#), [DNA Replication](#)

## Application Details

Application Notes: WB: 1:2000. WB: 1:1000

Restrictions: For Research Use only

## Handling

Format: Liquid

Buffer: Purified polyclonal antibody supplied in PBS with 0.09 % (W/V) sodium azide.

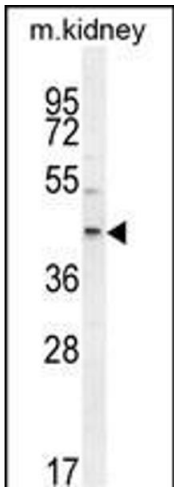
Preservative: Sodium azide

Precaution of Use: This product contains Sodium azide: a POISONOUS AND HAZARDOUS SUBSTANCE which should be handled by trained staff only.

Storage: 4 °C,-20 °C

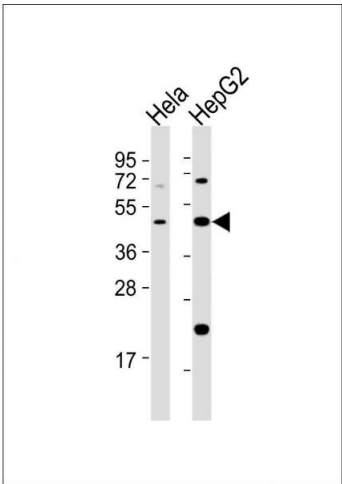
Storage Comment: Maintain refrigerated at 2-8 °C for up to 6 months. For long term storage store at -20 °C in small aliquots to prevent freeze-thaw cycles.

Expiry Date: 6 months



#### Western Blotting

**Image 1.** E2F2 Antibody (Center) (ABIN654438 and ABIN2844173) western blot analysis in mouse kidney tissue lysates (35 µg/lane). This demonstrates the E2F2 antibody detected the E2F2 protein (arrow).



#### Western Blotting

**Image 2.** All lanes : Anti-E2F2 Antibody (Center) at 1:2000 dilution Lane 1: HeLa whole cell lysates Lane 2: HepG2 whole cell lysates Lysates/proteins at 20 µg per lane. Secondary Goat Anti-Rabbit IgG, (H+L), Peroxidase conjugated at 1/10000 dilution Predicted band size : 48 kDa Blocking/Dilution buffer: 5 % NFDM/TBST.