

Datasheet for ABIN654442
anti-CCR8 antibody (AA 305-335)[Go to Product page](#)

2 Images

Overview

Quantity:	400 µL
Target:	CCR8
Binding Specificity:	AA 305-335
Reactivity:	Human
Host:	Rabbit
Clonality:	Polyclonal
Conjugate:	This CCR8 antibody is un-conjugated
Application:	Western Blotting (WB), Flow Cytometry (FACS)

Product Details

Immunogen:	This CCR8 antibody is generated from rabbits immunized with a KLH conjugated synthetic peptide between 305-335 amino acids of human CCR8.
Clone:	RB28557
Isotype:	IgG
Purification:	This antibody is purified through a protein A column, followed by peptide affinity purification.

Target Details

Target:	CCR8
Alternative Name:	CCR8 (CCR8 Products)
Background:	CCR8 encodes a member of the beta chemokine receptor family, which is predicted to be a

Target Details

seven transmembrane protein similar to G protein-coupled receptors. Chemokines and their receptors are important for the migration of various cell types into the inflammatory sites. This receptor protein preferentially expresses in the thymus. I-309, thymus activation-regulated cytokine (TARC) and macrophage inflammatory protein-1 beta (MIP-1 beta) have been identified as ligands of this receptor. Studies of this receptor and its ligands suggested its role in regulation of monocyte chemotaxis and thymic cell apoptosis. More specifically, this receptor may contribute to the proper positioning of activated T cells within the antigenic challenge sites and specialized areas of lymphoid tissues. CCR8 is located at the chemokine receptor gene cluster region.

Molecular Weight:	40844
-------------------	-------

Gene ID:	1237
----------	------

NCBI Accession:	NP_005192
-----------------	---------------------------

UniProt:	P51685
----------	------------------------

Application Details

Application Notes:	WB: 1:1000. FC: 1:10~50
--------------------	-------------------------

Restrictions:	For Research Use only
---------------	-----------------------

Handling

Format:	Liquid
---------	--------

Buffer:	Purified polyclonal antibody supplied in PBS with 0.09 % (W/V) sodium azide.
---------	--

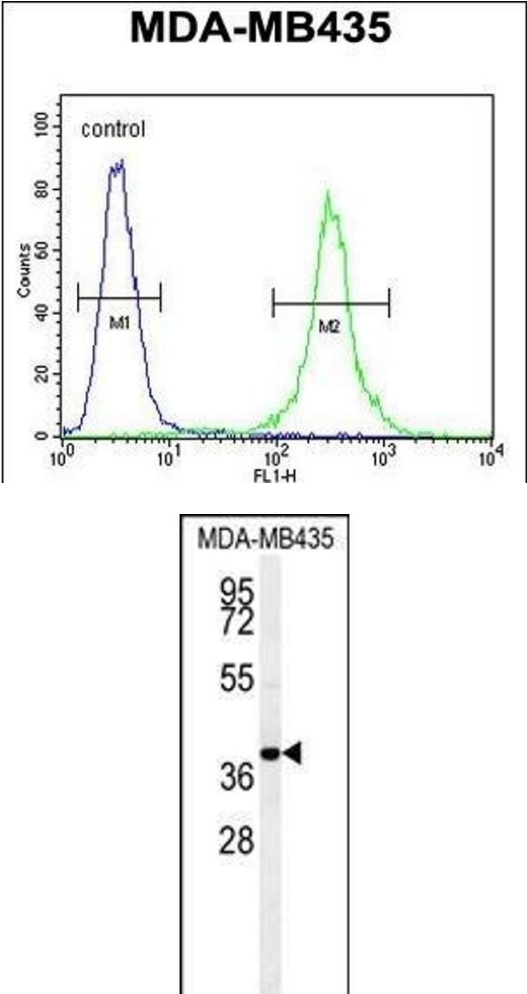
Preservative:	Sodium azide
---------------	--------------

Precaution of Use:	This product contains Sodium azide: a POISONOUS AND HAZARDOUS SUBSTANCE which should be handled by trained staff only.
--------------------	--

Storage:	4 °C, -20 °C
----------	--------------

Storage Comment:	Maintain refrigerated at 2-8 °C for up to 6 months. For long term storage store at -20 °C in small aliquots to prevent freeze-thaw cycles.
------------------	--

Expiry Date:	6 months
--------------	----------



Flow Cytometry

Image 1. CCR8 Antibody (C-term) (ABIN654442 and ABIN2844176) flow cytometric analysis of MDA-M cells (right histogram) compared to a negative control (left histogram).FITC-conjugated goat-anti-rabbit secondary antibodies were used for the analysis.

Western Blotting

Image 2. CCR8 Antibody (C-term) (ABIN654442 and ABIN2844176) western blot analysis in MDA-M cell line lysates (35 µg/lane).This demonstrates the CCR8 antibody detected the CCR8 protein (arrow).