

Datasheet for ABIN654443
anti-CXCR7 antibody (C-Term)[Go to Product page](#)

2 Images

Overview

Quantity:	400 µL
Target:	CXCR7
Binding Specificity:	AA 333-362, C-Term
Reactivity:	Human
Host:	Rabbit
Clonality:	Polyclonal
Application:	Western Blotting (WB), Flow Cytometry (FACS)

Product Details

Immunogen:	This CMKOR1 antibody is generated from rabbits immunized with a KLH conjugated synthetic peptide between 333-362 amino acids from the C-terminal region of human CMKOR1.
Clone:	RB24391
Isotype:	Ig Fraction
Purification:	This antibody is purified through a protein A column, followed by peptide affinity purification.

Target Details

Target:	CXCR7
Alternative Name:	CMKOR1 (CXCR7 Products)
Background:	CXCR7 encodes a member of the G-protein coupled receptor family. Although this protein was earlier thought to be a receptor for vasoactive intestinal peptide (VIP), it is now considered to be an orphan receptor, in that its endogenous ligand has not been identified. The protein is also a

Target Details

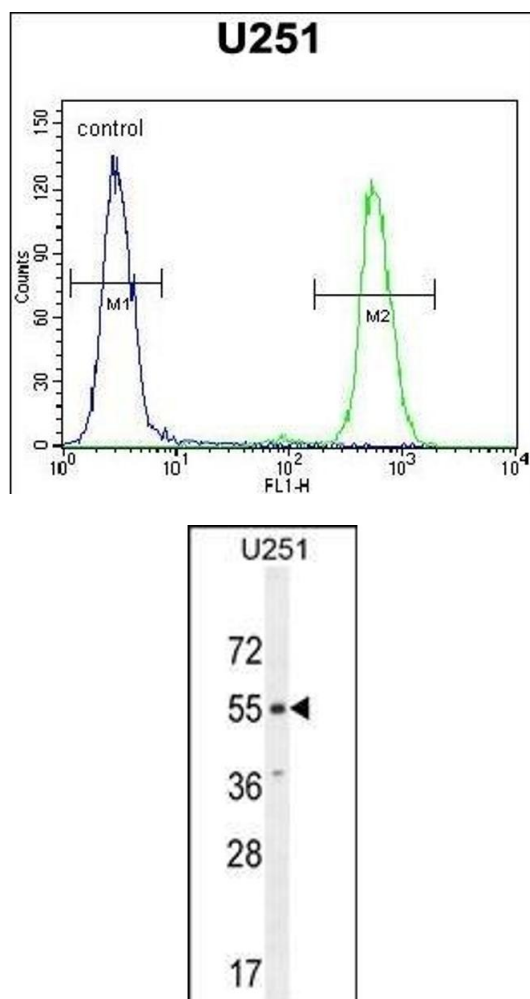
	coreceptor for human immunodeficiency viruses (HIV). Translocations involving this gene and HMGA2 on chromosome 12 have been observed in lipomas. [provided by RefSeq].
Molecular Weight:	41493
Gene ID:	57007
NCBI Accession:	NP_064707
UniProt:	P25106
Pathways:	Myometrial Relaxation and Contraction , Negative Regulation of intrinsic apoptotic Signaling

Application Details

Application Notes:	WB: 1:1000. FC: 1:10~50
Restrictions:	For Research Use only

Handling

Format:	Liquid
Buffer:	Purified polyclonal antibody supplied in PBS with 0.09 % (W/V) sodium azide.
Preservative:	Sodium azide
Precaution of Use:	This product contains Sodium azide: a POISONOUS AND HAZARDOUS SUBSTANCE which should be handled by trained staff only.
Storage:	4 °C,-20 °C
Storage Comment:	Maintain refrigerated at 2-8 °C for up to 6 months. For long term storage store at -20 °C in small aliquots to prevent freeze-thaw cycles.
Expiry Date:	6 months



Flow Cytometry

Image 1. CMKOR1 Antibody (C-term) (ABIN654443 and ABIN2844177) flow cytometric analysis of cells (right histogram) compared to a negative control cell (left histogram). FITC-conjugated goat-anti-rabbit secondary antibodies were used for the analysis.

Western Blotting

Image 2. CMKOR1 Antibody (C-term) (ABIN654443 and ABIN2844177) western blot analysis in cell line lysates (35 μ g/lane). This demonstrates the CMKOR1 antibody detected the CMKOR1 protein (arrow).