

Datasheet for ABIN654446
anti-PRSS3 antibody (N-Term)[Go to Product page](#)

3 Images

Overview

Quantity:	400 µL
Target:	PRSS3
Binding Specificity:	AA 13-40, N-Term
Reactivity:	Human
Host:	Rabbit
Clonality:	Polyclonal
Conjugate:	This PRSS3 antibody is un-conjugated
Application:	Western Blotting (WB), Flow Cytometry (FACS), Immunohistochemistry (Paraffin-embedded Sections) (IHC (p))

Product Details

Immunogen:	This PRSS3 antibody is generated from rabbits immunized with a KLH conjugated synthetic peptide between 13-40 amino acids from the N-terminal region of human PRSS3.
Clone:	RB24403
Isotype:	IgG
Purification:	This antibody is purified through a protein A column, followed by peptide affinity purification.

Target Details

Target:	PRSS3
Alternative Name:	PRSS3 (PRSS3 Products)

Target Details

Background: PRSS3 encodes a trypsinogen, which is a member of the trypsin family of serine proteases. This enzyme is expressed in the brain and pancreas and is resistant to common trypsin inhibitors. It is active on peptide linkages involving the carboxyl group of lysine or arginine. PRSS3 is localized to the locus of T cell receptor beta variable orphans on chromosome 9. Four transcript variants encoding different isoforms have been described for this gene.

Gene ID: 5646

NCBI Accession: [NP_001184026](#), [NP_002762](#), [NP_031369](#)

Application Details

Application Notes: WB: 1:1000. IHC-P: 1:50~100. FC: 1:10~50

Restrictions: For Research Use only

Handling

Format: Liquid

Buffer: Purified polyclonal antibody supplied in PBS with 0.09 % (W/V) sodium azide.

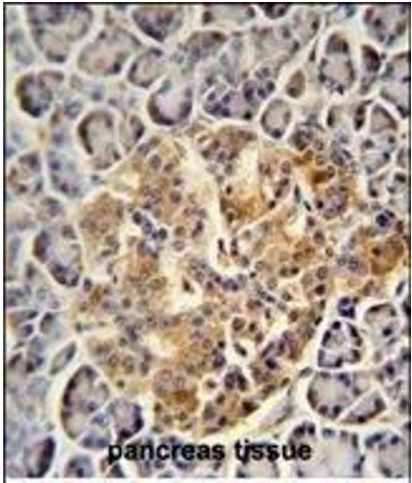
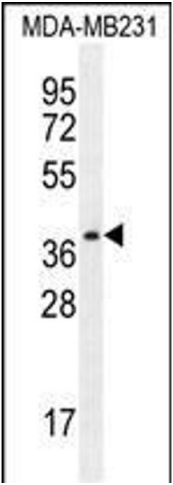
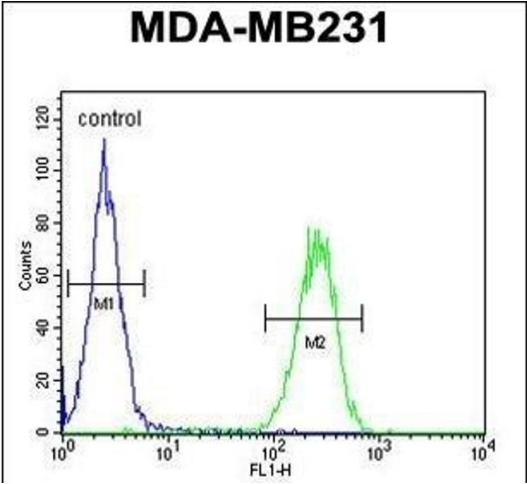
Preservative: Sodium azide

Precaution of Use: This product contains Sodium azide: a POISONOUS AND HAZARDOUS SUBSTANCE which should be handled by trained staff only.

Storage: 4 °C,-20 °C

Storage Comment: Maintain refrigerated at 2-8 °C for up to 6 months. For long term storage store at -20 °C in small aliquots to prevent freeze-thaw cycles.

Expiry Date: 6 months



Flow Cytometry

Image 1. PRSS3 Antibody (N-term) (ABIN654446 and ABIN2844180) flow cytometric analysis of MDA-M cells (right histogram) compared to a negative control cell (left histogram). FITC-conjugated goat-anti-rabbit secondary antibodies were used for the analysis.

Western Blotting

Image 2. PRSS3 Antibody (N-term) (ABIN654446 and ABIN2844180) western blot analysis in MDA-M cell line lysates (35 µg/lane). This demonstrates the PRSS3 antibody detected the PRSS3 protein (arrow).

Immunohistochemistry (Paraffin-embedded Sections)

Image 3. PRSS3 antibody (N-term) (ABIN654446 and ABIN2844180) immunohistochemistry analysis in formalin fixed and paraffin embedded human pancreas tissue followed by peroxidase conjugation of the secondary antibody and DAB staining. This data demonstrates the use of the PRSS3 antibody (N-term) for immunohistochemistry. Clinical relevance has not been evaluated.