

Datasheet for ABIN654448
anti-ISCA2 antibody (AA 72-101)[Go to Product page](#)

2 Images

Overview

Quantity:	400 µL
Target:	ISCA2
Binding Specificity:	AA 72-101
Reactivity:	Human, Mouse
Host:	Rabbit
Clonality:	Polyclonal
Conjugate:	This ISCA2 antibody is un-conjugated
Application:	Western Blotting (WB), Immunohistochemistry (Paraffin-embedded Sections) (IHC (p))

Product Details

Immunogen:	This ISCA2 antibody is generated from rabbits immunized with a KLH conjugated synthetic peptide between 72-101 amino acids from the Central region of human ISCA2.
Clone:	RB27637
Isotype:	Ig Fraction
Purification:	This antibody is purified through a protein A column, followed by peptide affinity purification.

Target Details

Target:	ISCA2
Alternative Name:	ISCA2 (ISCA2 Products)
Background:	ISCA2 is involved in the assembly of mitochondrial iron-sulfur proteins. Probably involved in the

Target Details

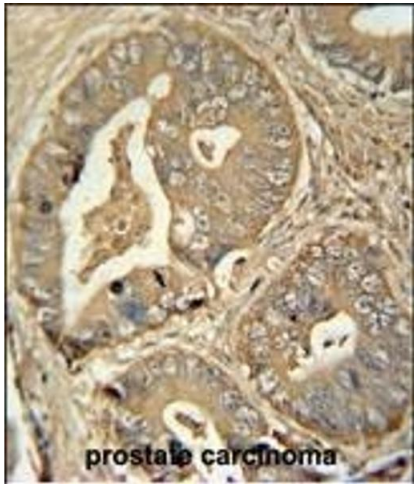
	binding of an intermediate of Fe/S cluster assembly (By similarity).
Molecular Weight:	16476
Gene ID:	122961
NCBI Accession:	NP_001258936 , NP_919255
UniProt:	Q86U28

Application Details

Application Notes:	WB: 1:1000. IHC-P: 1:50~100
Restrictions:	For Research Use only

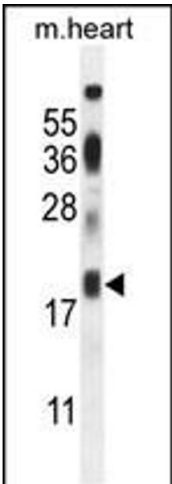
Handling

Format:	Liquid
Buffer:	Purified polyclonal antibody supplied in PBS with 0.09 % (W/V) sodium azide.
Preservative:	Sodium azide
Precaution of Use:	This product contains Sodium azide: a POISONOUS AND HAZARDOUS SUBSTANCE which should be handled by trained staff only.
Storage:	4 °C,-20 °C
Storage Comment:	Maintain refrigerated at 2-8 °C for up to 6 months. For long term storage store at -20 °C in small aliquots to prevent freeze-thaw cycles.
Expiry Date:	6 months



Immunohistochemistry (Paraffin-embedded Sections)

Image 1. ISCA2 antibody (Center) (ABIN654448 and ABIN2844182) immunohistochemistry analysis in formalin fixed and paraffin embedded human prostate carcinoma followed by peroxidase conjugation of the secondary antibody and DAB staining. This data demonstrates the use of the ISCA2 antibody (Center) for immunohistochemistry. Clinical relevance has not been evaluated.



Western Blotting

Image 2. ISCA2 Antibody (Center) (ABIN654448 and ABIN2844182) western blot analysis in mouse heart tissue lysates (35 µg/lane). This demonstrates the ISCA2 antibody detected the ISCA2 protein (arrow).