



[Go to Product page](#)

Datasheet for ABIN654451  
**anti-CD103 antibody (C-Term)**

1 Image

Overview

Quantity:	400 µL
Target:	CD103 (ITGAE)
Binding Specificity:	AA 1146-1173, C-Term
Reactivity:	Human
Host:	Rabbit
Clonality:	Polyclonal
Conjugate:	This CD103 antibody is un-conjugated
Application:	Western Blotting (WB)

Product Details

Immunogen:	This ITGAE antibody is generated from rabbits immunized with a KLH conjugated synthetic peptide between 1146-1173 amino acids from the C-terminal region of human ITGAE.
Clone:	RB27645
Isotype:	Ig Fraction
Purification:	This antibody is purified through a protein A column, followed by peptide affinity purification.

Target Details

Target:	CD103 (ITGAE)
Alternative Name:	ITGAE ( <a href="#">ITGAE Products</a> )
Background:	Integrins are heterodimeric integral membrane proteins composed of an alpha chain and a beta

## Target Details

---

chain. ITGAE encodes an I-domain-containing alpha integrin that undergoes post-translational cleavage in the extracellular domain, yielding disulfide-linked heavy and light chains. In combination with the beta 7 integrin, this protein forms the E-cadherin binding integrin known as the human mucosal lymphocyte-1 antigen. This protein is preferentially expressed in human intestinal intraepithelial lymphocytes (IEL), and in addition to a role in adhesion, it may serve as an accessory molecule for IEL activation. [provided by RefSeq].

---

Molecular Weight: 130159

---

Gene ID: 3682

---

NCBI Accession: [NP\\_002199](#)

---

UniProt: [P38570](#)

## Application Details

---

---

Application Notes: WB: 1:1000

---

Restrictions: For Research Use only

## Handling

---

---

Format: Liquid

---

Buffer: Purified polyclonal antibody supplied in PBS with 0.09 % (W/V) sodium azide.

---

Preservative: Sodium azide

---

Precaution of Use: This product contains Sodium azide: a POISONOUS AND HAZARDOUS SUBSTANCE which should be handled by trained staff only.

---

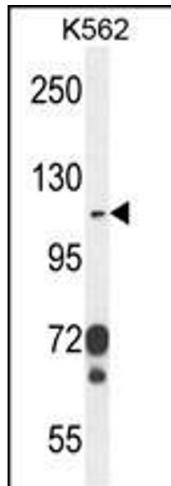
Storage: 4 °C, -20 °C

---

Storage Comment: Maintain refrigerated at 2-8 °C for up to 6 months. For long term storage store at -20 °C in small aliquots to prevent freeze-thaw cycles.

---

Expiry Date: 6 months



### Western Blotting

**Image 1.** ITGAE Antibody (C-term) (ABIN654451 and ABIN2844185) western blot analysis in K562 cell line lysates (35 µg/lane). This demonstrates the ITGAE antibody detected the ITGAE protein (arrow).