

Datasheet for ABIN654454  
**anti-MRPS24 antibody (AA 21-50)**

## 3 Images

[Go to Product page](#)

## Overview

Quantity:	400 µL
Target:	MRPS24
Binding Specificity:	AA 21-50
Reactivity:	Human
Host:	Rabbit
Clonality:	Polyclonal
Conjugate:	This MRPS24 antibody is un-conjugated
Application:	Western Blotting (WB), Flow Cytometry (FACS), Immunohistochemistry (Paraffin-embedded Sections) (IHC (p))

## Product Details

Immunogen:	This MRPS24 antibody is generated from rabbits immunized with a KLH conjugated synthetic peptide between 21-50 amino acids from the Central region of human MRPS24.
Clone:	RB24165
Isotype:	Ig Fraction
Purification:	This antibody is purified through a protein A column, followed by peptide affinity purification.

## Target Details

Target:	MRPS24
Alternative Name:	MRPS24 ( <a href="#">MRPS24 Products</a> )

## Target Details

**Background:** Mammalian mitochondrial ribosomal proteins are encoded by nuclear genes and help in protein synthesis within the mitochondrion. Mitochondrial ribosomes (mitoribosomes) consist of a small 28S subunit and a large 39S subunit. They have an estimated 75 % protein to rRNA composition compared to prokaryotic ribosomes, where this ratio is reversed. Another difference between mammalian mitoribosomes and prokaryotic ribosomes is that the latter contain a 5S rRNA. Among different species, the proteins comprising the mitoribosome differ greatly in sequence, and sometimes in biochemical properties, which prevents easy recognition by sequence homology. MRPS24 encodes a 28S subunit protein. A pseudogene corresponding to this gene is found on chromosome 11. [provided by RefSeq].

**Molecular Weight:** 19015

**Gene ID:** 64951

**NCBI Accession:** [NP\\_114403](#)

**UniProt:** [Q96EL2](#)

## Application Details

**Application Notes:** WB: 1:1000. IHC-P: 1:50~100. FC: 1:10~50

**Restrictions:** For Research Use only

## Handling

**Format:** Liquid

**Buffer:** Purified polyclonal antibody supplied in PBS with 0.09 % (W/V) sodium azide.

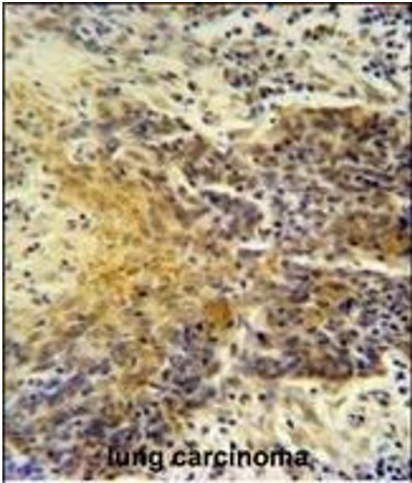
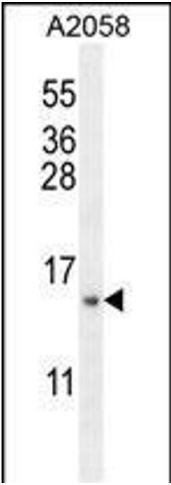
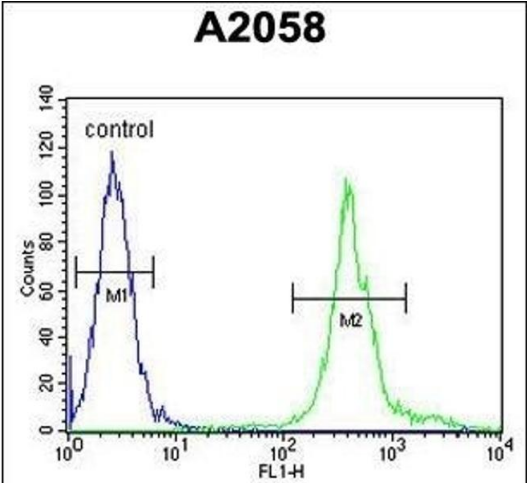
**Preservative:** Sodium azide

**Precaution of Use:** This product contains Sodium azide: a POISONOUS AND HAZARDOUS SUBSTANCE which should be handled by trained staff only.

**Storage:** 4 °C, -20 °C

**Storage Comment:** Maintain refrigerated at 2-8 °C for up to 6 months. For long term storage store at -20 °C in small aliquots to prevent freeze-thaw cycles.

**Expiry Date:** 6 months



### Flow Cytometry

**Image 1.** MRPS24 Antibody (Center) (ABIN654454 and ABIN2844188) flow cytometric analysis of cells (right histogram) compared to a negative control cell (left histogram). FITC-conjugated goat-anti-rabbit secondary antibodies were used for the analysis.

### Western Blotting

**Image 2.** MRPS24 Antibody (Center) (ABIN654454 and ABIN2844188) western blot analysis in cell line lysates (35  $\mu$ g/lane). This demonstrates the MRPS24 antibody detected the MRPS24 protein (arrow).

### Immunohistochemistry (Paraffin-embedded Sections)

**Image 3.** MRPS24 antibody (Center) (ABIN654454 and ABIN2844188) immunohistochemistry analysis in formalin fixed and paraffin embedded human lung carcinoma followed by peroxidase conjugation of the secondary antibody and DAB staining. This data demonstrates the use of the MRPS24 antibody (Center) for immunohistochemistry. Clinical relevance has not been evaluated.