

Datasheet for ABIN654455
anti-MICAL-Like 1 antibody (C-Term)[Go to Product page](#)

2 Images

Overview

Quantity:	400 µL
Target:	MICAL-Like 1 (MICALL1)
Binding Specificity:	AA 752-781, C-Term
Reactivity:	Human
Host:	Rabbit
Clonality:	Polyclonal
Conjugate:	This MICAL-Like 1 antibody is un-conjugated
Application:	Western Blotting (WB), Immunohistochemistry (Paraffin-embedded Sections) (IHC (p))

Product Details

Immunogen:	This MICALL1 antibody is generated from rabbits immunized with a KLH conjugated synthetic peptide between 752-781 amino acids from the C-terminal region of human MICALL1.
Clone:	RB24168
Isotype:	Ig Fraction
Purification:	This antibody is purified through a protein A column, followed by peptide affinity purification.

Target Details

Target:	MICAL-Like 1 (MICALL1)
Alternative Name:	MICALL1 (MICALL1 Products)
Background:	MICALL1 may be a cytoskeletal regulator.

Target Details

Molecular Weight:	93441
Gene ID:	85377
NCBI Accession:	NP_203744
UniProt:	Q8N3F8

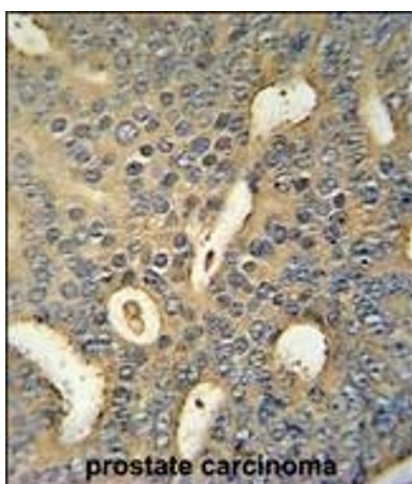
Application Details

Application Notes:	WB: 1:1000. IHC-P: 1:50~100
Restrictions:	For Research Use only

Handling

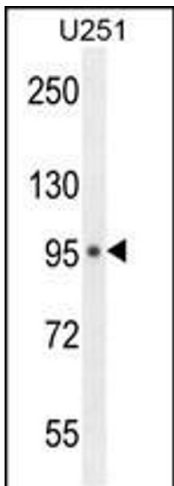
Format:	Liquid
Buffer:	Purified polyclonal antibody supplied in PBS with 0.09 % (W/V) sodium azide.
Preservative:	Sodium azide
Precaution of Use:	This product contains Sodium azide: a POISONOUS AND HAZARDOUS SUBSTANCE which should be handled by trained staff only.
Storage:	4 °C, -20 °C
Storage Comment:	Maintain refrigerated at 2-8 °C for up to 6 months. For long term storage store at -20 °C in small aliquots to prevent freeze-thaw cycles.
Expiry Date:	6 months

Validation report #103541 for Western Blotting (WB)



Immunohistochemistry (Paraffin-embedded Sections)

Image 1. MICALL1 Antibody (C-term) (ABIN654455 and ABIN2844189) immunohistochemistry analysis in formalin fixed and paraffin embedded human prostate carcinoma followed by peroxidase conjugation of the secondary antibody and DAB staining. This data demonstrates the use of the MICALL1 Antibody (C-term) for immunohistochemistry. Clinical relevance has not been evaluated.



Western Blotting

Image 2. MICALL1 Antibody (C-term) (ABIN654455 and ABIN2844189) western blot analysis in cell line lysates (35 μ g/lane). This demonstrates the MICALL1 antibody detected the LACRT protein (arrow).