

Datasheet for ABIN654459  
**anti-SLC35F6 antibody (C-Term)**



[Go to Product page](#)

3 Images

Overview

Quantity:	400 µL
Target:	SLC35F6
Binding Specificity:	AA 329-358, C-Term
Reactivity:	Human
Host:	Rabbit
Clonality:	Polyclonal
Conjugate:	This SLC35F6 antibody is un-conjugated
Application:	Western Blotting (WB), Flow Cytometry (FACS), Immunohistochemistry (Paraffin-embedded Sections) (IHC (p))

Product Details

Immunogen:	This CB018 antibody is generated from rabbits immunized with a KLH conjugated synthetic peptide between 329-358 amino acids from the C-terminal region of human CB018.
Clone:	RB24379
Isotype:	Ig Fraction
Purification:	This antibody is purified through a protein A column, followed by peptide affinity purification.

Target Details

Target:	SLC35F6
Alternative Name:	CB018 ( <a href="#">SLC35F6 Products</a> )

## Target Details

---

Background:	The exact function of C2orf18 remains unknown. It contains 1 DUF6 domain.
Molecular Weight:	40214
Gene ID:	54978
NCBI Accession:	<a href="#">NP_060347</a>
UniProt:	<a href="#">Q8N357</a>

## Application Details

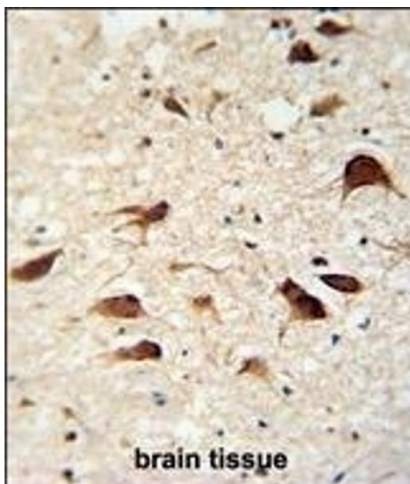
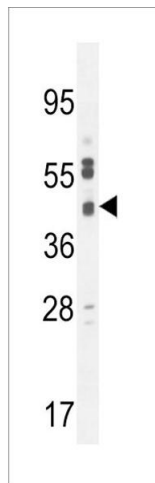
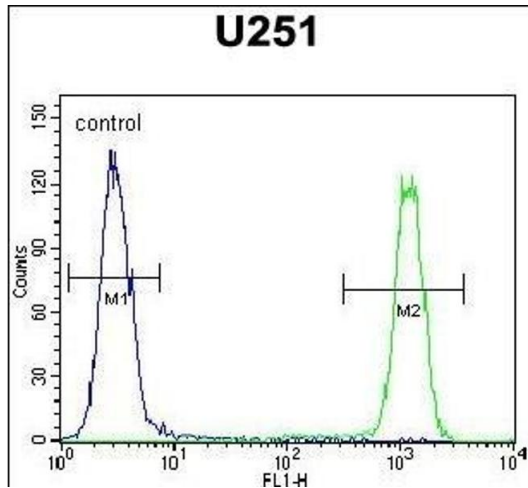
---

Application Notes:	WB: 1:1000. IHC-P: 1:50~100. FC: 1:10~50
Restrictions:	For Research Use only

## Handling

---

Format:	Liquid
Buffer:	Purified polyclonal antibody supplied in PBS with 0.09 % (W/V) sodium azide.
Preservative:	Sodium azide
Precaution of Use:	This product contains Sodium azide: a POISONOUS AND HAZARDOUS SUBSTANCE which should be handled by trained staff only.
Storage:	4 °C,-20 °C
Storage Comment:	Maintain refrigerated at 2-8 °C for up to 6 months. For long term storage store at -20 °C in small aliquots to prevent freeze-thaw cycles.
Expiry Date:	6 months



### Flow Cytometry

**Image 1.** C Antibody (C-term) (ABIN654459 and ABIN2844192) flow cytometric analysis of cells (right histogram) compared to a negative control cell (left histogram). FITC-conjugated goat-anti-rabbit secondary antibodies were used for the analysis.

### Western Blotting

**Image 2.** C Antibody (C-term) (ABIN654459 and ABIN2844192) western blot analysis in cell line lysates (35  $\mu$ g/lane). This demonstrates the C antibody detected the C protein (arrow).

### Immunohistochemistry (Paraffin-embedded Sections)

**Image 3.** C antibody (C-term) (ABIN654459 and ABIN2844192) immunohistochemistry analysis in formalin fixed and paraffin embedded human brain tissue followed by peroxidase conjugation of the secondary antibody and DAB staining. This data demonstrates the use of the C antibody (C-term) for immunohistochemistry. Clinical relevance has not been evaluated.