

Datasheet for ABIN654460
anti-SLC6A12 antibody (N-Term)



[Go to Product page](#)

2 Images

Overview

Quantity:	400 µL
Target:	SLC6A12
Binding Specificity:	AA 9-38, N-Term
Reactivity:	Human
Host:	Rabbit
Clonality:	Polyclonal
Conjugate:	This SLC6A12 antibody is un-conjugated
Application:	Western Blotting (WB), Flow Cytometry (FACS)

Product Details

Immunogen:	This S6A12 antibody is generated from rabbits immunized with a KLH conjugated synthetic peptide between 9-38 amino acids from the N-terminal region of human S6A12.
Clone:	RB24381
Isotype:	Ig Fraction
Purification:	This antibody is purified through a protein A column, followed by peptide affinity purification.

Target Details

Target:	SLC6A12
Alternative Name:	S6A12 (SLC6A12 Products)
Background:	Transports betaine and GABA. May have a role in regulation of GABAergic transmission in the

Target Details

brain through the reuptake of GABA into presynaptic terminals, as well as in osmotic regulation.

Molecular Weight: 69368

Gene ID: 6539

NCBI Accession: [NP_001116319](#), [NP_001116320](#), [NP_001193860](#), [NP_003035](#)

UniProt: [P48065](#)

Application Details

Application Notes: WB: 1:1000. FC: 1:10~50

Restrictions: For Research Use only

Handling

Format: Liquid

Buffer: Purified polyclonal antibody supplied in PBS with 0.09 % (W/V) sodium azide.

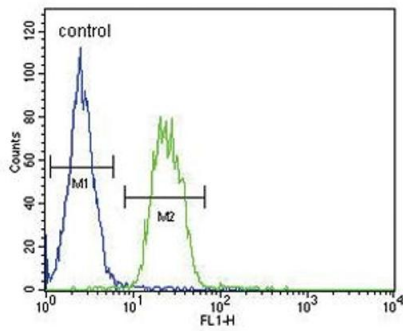
Preservative: Sodium azide

Precaution of Use: This product contains Sodium azide: a POISONOUS AND HAZARDOUS SUBSTANCE which should be handled by trained staff only.

Storage: 4 °C, -20 °C

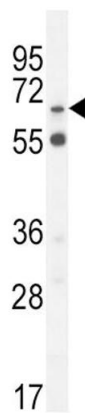
Storage Comment: Maintain refrigerated at 2-8 °C for up to 6 months. For long term storage store at -20 °C in small aliquots to prevent freeze-thaw cycles.

Expiry Date: 6 months



Flow Cytometry

Image 1. S6A12 Antibody (N-term) (ABIN654460 and ABIN2844193) flow cytometric analysis of MDA-M cells (right histogram) compared to a negative control cell (left histogram). FITC-conjugated goat-anti-rabbit secondary antibodies were used for the analysis.



Western Blotting

Image 2. S6A12 Antibody (N-term) (ABIN654460 and ABIN2844193) western blot analysis in MDA-M cell line lysates (35 µg/lane). This demonstrates the S6A12 antibody detected the S6A12 protein (arrow).