

Datasheet for ABIN654464  
**anti-Vitrin antibody (C-Term)**

## 3 Images

[Go to Product page](#)

## Overview

Quantity:	400 µL
Target:	Vitrin (VIT)
Binding Specificity:	AA 567-595, C-Term
Reactivity:	Human
Host:	Rabbit
Clonality:	Polyclonal
Conjugate:	This Vitrin antibody is un-conjugated
Application:	Western Blotting (WB), Flow Cytometry (FACS), Immunohistochemistry (Paraffin-embedded Sections) (IHC (p))

## Product Details

Immunogen:	This VITRN antibody is generated from rabbits immunized with a KLH conjugated synthetic peptide between 567-595 amino acids from the C-terminal region of human VITRN.
Clone:	RB27060
Isotype:	Ig Fraction
Predicted Reactivity:	M
Purification:	This antibody is purified through a protein A column, followed by peptide affinity purification.

## Target Details

Target:	Vitrin (VIT)
---------	--------------

## Target Details

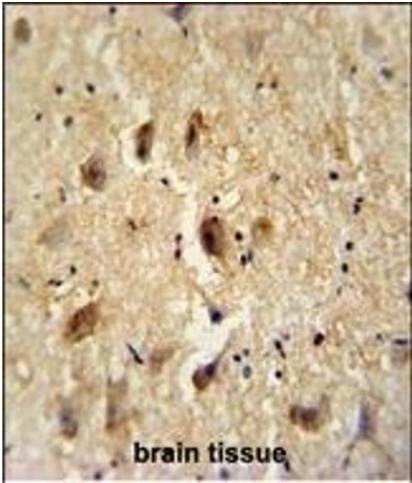
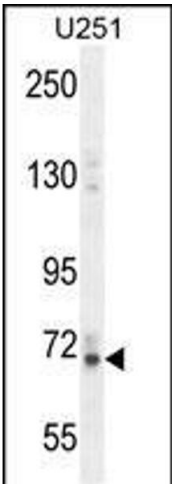
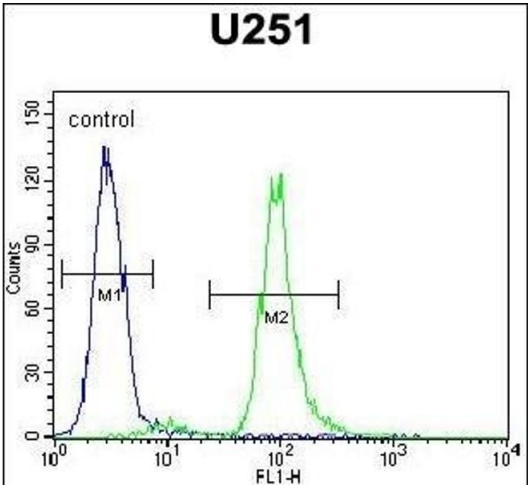
Alternative Name:	VITRN ( <a href="#">VIT Products</a> )
Background:	Promotes matrix assembly and cell adhesiveness (By similarity).
Molecular Weight:	73930
Gene ID:	5212
NCBI Accession:	<a href="#">NP_001171440</a> , <a href="#">NP_001171441</a> , <a href="#">NP_001171442</a> , <a href="#">NP_001171443</a> , <a href="#">NP_444506</a>
UniProt:	<a href="#">Q6UXI7</a>

## Application Details

Application Notes:	WB: 1:1000. IHC-P: 1:50~100. FC: 1:10~50
Restrictions:	For Research Use only

## Handling

Format:	Liquid
Buffer:	Purified polyclonal antibody supplied in PBS with 0.09 % (W/V) sodium azide.
Preservative:	Sodium azide
Precaution of Use:	This product contains Sodium azide: a POISONOUS AND HAZARDOUS SUBSTANCE which should be handled by trained staff only.
Storage:	4 °C,-20 °C
Storage Comment:	Maintain refrigerated at 2-8 °C for up to 6 months. For long term storage store at -20 °C in small aliquots to prevent freeze-thaw cycles.
Expiry Date:	6 months



### Flow Cytometry

**Image 1.** VITRN Antibody (C-term) (ABIN654464 and ABIN2844197) flow cytometric analysis of cells (right histogram) compared to a negative control cell (left histogram). FITC-conjugated goat-anti-rabbit secondary antibodies were used for the analysis.

### Western Blotting

**Image 2.** VITRN Antibody (C-term) (ABIN654464 and ABIN2844197) western blot analysis in cell line lysates (35  $\mu$ g/lane). This demonstrates the VITRN antibody detected the VITRN protein (arrow).

### Immunohistochemistry (Paraffin-embedded Sections)

**Image 3.** VITRN antibody (C-term) (ABIN654464 and ABIN2844197) immunohistochemistry analysis in formalin fixed and paraffin embedded human brain tissue followed by peroxidase conjugation of the secondary antibody and DAB staining. This data demonstrates the use of the VITRN antibody (C-term) for immunohistochemistry. Clinical relevance has not been evaluated.