



Datasheet for ABIN654466  
**anti-ATF7IP2 antibody (AA 318-347)**



[Go to Product page](#)

3 Images

### Overview

Quantity:	400 µL
Target:	ATF7IP2
Binding Specificity:	AA 318-347
Reactivity:	Human, Mouse
Host:	Rabbit
Clonality:	Polyclonal
Conjugate:	This ATF7IP2 antibody is un-conjugated
Application:	Western Blotting (WB), Flow Cytometry (FACS), Immunohistochemistry (Paraffin-embedded Sections) (IHC (p))

### Product Details

Immunogen:	This MCAF2 antibody is generated from rabbits immunized with a KLH conjugated synthetic peptide between 318-347 amino acids from the Central region of human MCAF2.
Clone:	RB28618
Isotype:	Ig Fraction
Purification:	This antibody is purified through a protein A column, followed by peptide affinity purification.

### Target Details

Target:	ATF7IP2
Alternative Name:	MCAF2 ( <a href="#">ATF7IP2 Products</a> )

## Target Details

---

Background:	Recruiter that couples transcriptional factors to general transcription apparatus and thereby modulates transcription regulation and chromatin formation. Can both act as an activator or a repressor depending on the context. Mediates MBD1-dependent transcriptional repression, probably by recruiting complexes containing SETDB1. The complex formed with MBD1 and SETDB1 represses transcription and probably couples DNA methylation and histone 'Lys-9' trimethylation activity (Probable).
Molecular Weight:	75764
Gene ID:	80063
NCBI Accession:	<a href="#">NP_001243089</a> , <a href="#">NP_079273</a>
UniProt:	<a href="#">Q5U623</a>

## Application Details

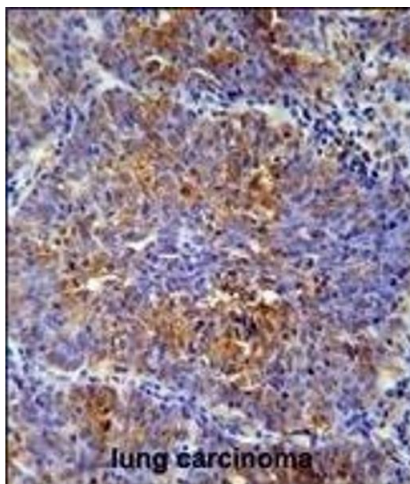
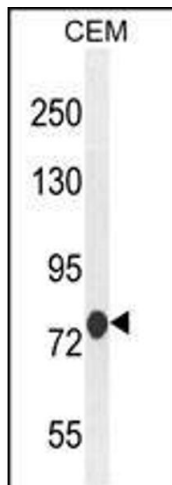
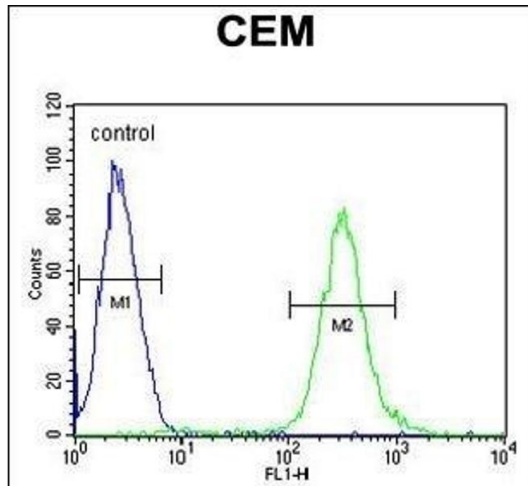
---

Application Notes:	WB: 1:1000. WB: 1:1000. IHC-P: 1:50~100. FC: 1:10~50
Restrictions:	For Research Use only

## Handling

---

Format:	Liquid
Buffer:	Purified polyclonal antibody supplied in PBS with 0.09 % (W/V) sodium azide.
Preservative:	Sodium azide
Precaution of Use:	This product contains Sodium azide: a POISONOUS AND HAZARDOUS SUBSTANCE which should be handled by trained staff only.
Storage:	4 °C, -20 °C
Storage Comment:	Maintain refrigerated at 2-8 °C for up to 6 months. For long term storage store at -20 °C in small aliquots to prevent freeze-thaw cycles.
Expiry Date:	6 months



### Flow Cytometry

**Image 1.** MCAF2 Antibody (Center) (ABIN654466 and ABIN2844199) flow cytometric analysis of CEM cells (right histogram) compared to a negative control cell (left histogram). FITC-conjugated goat-anti-rabbit secondary antibodies were used for the analysis.

### Western Blotting

**Image 2.** MCAF2 Antibody (Center) (ABIN654466 and ABIN2844199) western blot analysis in CEM cell line lysates (35 µg/lane). This demonstrates the MCAF2 antibody detected the MCAF2 protein (arrow).

### Immunohistochemistry (Paraffin-embedded Sections)

**Image 3.** MCAF2 Antibody (Center) (ABIN654466 and ABIN2844199) immunohistochemistry analysis in formalin fixed and paraffin embedded human lung carcinoma followed by peroxidase conjugation of the secondary antibody and DAB staining. This data demonstrates the use of the MCAF2 Antibody (Center) for immunohistochemistry. Clinical relevance has not been evaluated.