

Datasheet for ABIN654469  
**anti-CCDC85C antibody (N-Term)**[Go to Product page](#)

## 3 Images

## Overview

Quantity:	400 µL
Target:	CCDC85C
Binding Specificity:	AA 56-85, N-Term
Reactivity:	Human
Host:	Rabbit
Clonality:	Polyclonal
Conjugate:	This CCDC85C antibody is un-conjugated
Application:	Western Blotting (WB), Flow Cytometry (FACS), Immunohistochemistry (Paraffin-embedded Sections) (IHC (p))

## Product Details

Immunogen:	This CC85C antibody is generated from rabbits immunized with a KLH conjugated synthetic peptide between 56-85 amino acids from the N-terminal region of human CC85C.
Clone:	RB28634
Isotype:	Ig Fraction
Predicted Reactivity:	M
Purification:	This antibody is purified through a protein A column, followed by peptide affinity purification.

## Target Details

Target:	CCDC85C
---------	---------

## Target Details

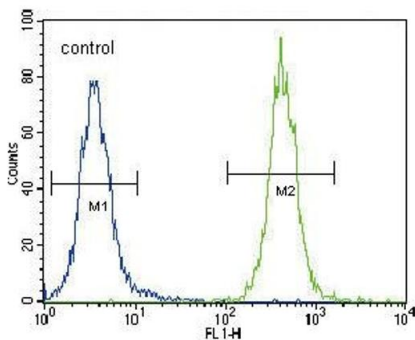
Alternative Name:	CC85C ( <a href="#">CCDC85C Products</a> )
Molecular Weight:	45210
Gene ID:	317762
NCBI Accession:	<a href="#">NP_001138467</a>
UniProt:	<a href="#">A6NKD9</a>

## Application Details

Application Notes:	WB: 1:1000. IHC-P: 1:10~50. FC: 1:10~50
Restrictions:	For Research Use only

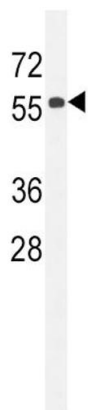
## Handling

Format:	Liquid
Buffer:	Purified polyclonal antibody supplied in PBS with 0.09 % (W/V) sodium azide.
Preservative:	Sodium azide
Precaution of Use:	This product contains Sodium azide: a POISONOUS AND HAZARDOUS SUBSTANCE which should be handled by trained staff only.
Storage:	4 °C,-20 °C
Storage Comment:	Maintain refrigerated at 2-8 °C for up to 6 months. For long term storage store at -20 °C in small aliquots to prevent freeze-thaw cycles.
Expiry Date:	6 months



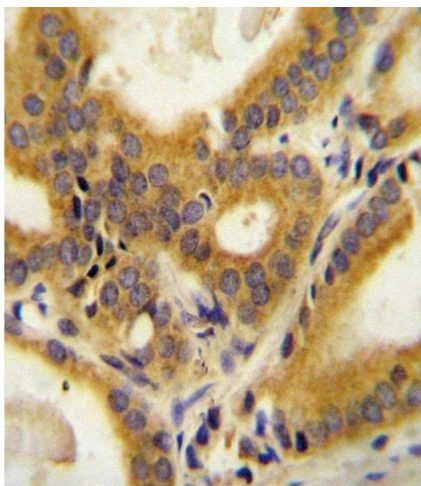
### Flow Cytometry

**Image 1.** CC85C Antibody (N-term) (ABIN654469 and ABIN2844203) flow cytometric analysis of 293 cells (right histogram) compared to a negative control cell (left histogram). FITC-conjugated goat-anti-rabbit secondary antibodies were used for the analysis.



### Western Blotting

**Image 2.** CC85C Antibody (N-term) (ABIN654469 and ABIN2844203) western blot analysis in 293 cell line lysates (35 µg/lane). This demonstrates the CC85C antibody detected the CC85C protein (arrow).



### Immunohistochemistry (Paraffin-embedded Sections)

**Image 3.** CC85C Antibody (N-term) (ABIN654469 and ABIN2844203) immunohistochemistry analysis in formalin fixed and paraffin embedded human prostate carcinoma followed by peroxidase conjugation of the secondary antibody and DAB staining. This data demonstrates the use of the CC85C Antibody (N-term) for immunohistochemistry. Clinical relevance has not been evaluated.