



[Go to Product page](#)

Datasheet for ABIN654471

anti-KIAA1609 antibody (C-Term)

4 Images

Overview

Quantity:	400 µL
Target:	KIAA1609 (MEAK7)
Binding Specificity:	AA 426-456, C-Term
Reactivity:	Human, Mouse
Host:	Rabbit
Clonality:	Polyclonal
Conjugate:	This KIAA1609 antibody is un-conjugated
Application:	Western Blotting (WB), Flow Cytometry (FACS), Immunohistochemistry (Paraffin-embedded Sections) (IHC (p))

Product Details

Immunogen:	This KIAA1609 antibody is generated from rabbits immunized with a KLH conjugated synthetic peptide between 426-456 amino acids from the C-terminal region of human K1609.
Clone:	RB28613
Isotype:	Ig Fraction
Purification:	This antibody is purified through a protein A column, followed by peptide affinity purification.

Target Details

Target:	KIAA1609 (MEAK7)
Alternative Name:	KIAA1609 (MEAK7 Products)

Target Details

Molecular Weight:	50994
Gene ID:	57707
NCBI Accession:	NP_065998
UniProt:	Q6P9B6

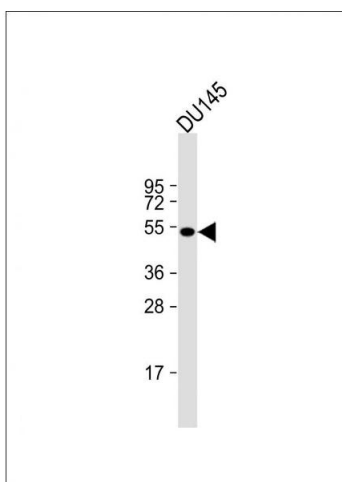
Application Details

Application Notes:	WB: 1:8000. WB: 1:1000. IHC-P: 1:50~100. FC: 1:10~50
Restrictions:	For Research Use only

Handling

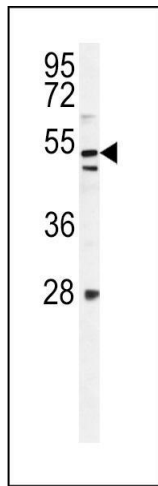
Format:	Liquid
Buffer:	Purified polyclonal antibody supplied in PBS with 0.09 % (W/V) sodium azide.
Preservative:	Sodium azide
Precaution of Use:	This product contains Sodium azide: a POISONOUS AND HAZARDOUS SUBSTANCE which should be handled by trained staff only.
Storage:	4 °C,-20 °C
Storage Comment:	Maintain refrigerated at 2-8 °C for up to 6 months. For long term storage store at -20 °C in small aliquots to prevent freeze-thaw cycles.
Expiry Date:	6 months

Images



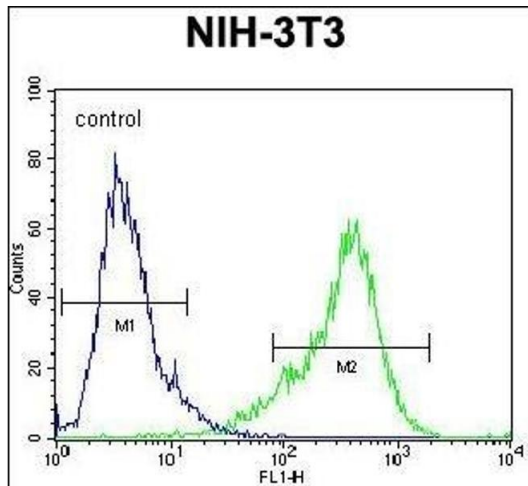
Western Blotting

Image 1. Anti-Kl Antibody (C-term) at 1:8000 dilution + D whole cell lysate Lysates/proteins at 20 µg per lane. Secondary Goat Anti-Rabbit IgG, (H+L), Peroxidase conjugated at 1/10000 dilution. Predicted band size : 51 kDa
Blocking/Dilution buffer: 5 % NFDN/TBST.



Western Blotting

Image 2. KI Antibody (C-term) (ABIN654471 and ABIN2844205) western blot analysis in mouse NIH-3T3 cell line lysates (35 µg/lane). This demonstrates the KI antibody detected the protein (arrow).



Flow Cytometry

Image 3. KI Antibody (C-term) (ABIN654471 and ABIN2844205) flow cytometric analysis of NIH-3T3 cells (right histogram) compared to a negative control cell (left histogram). FITC-conjugated goat-anti-rabbit secondary antibodies were used for the analysis.

Please check the [product details page](#) for more images. Overall 4 images are available for ABIN654471.