

Datasheet for ABIN654481
anti-IRF2BP2 antibody (AA 337-366)[Go to Product page](#)

2 Images

Overview

Quantity:	400 µL
Target:	IRF2BP2
Binding Specificity:	AA 337-366
Reactivity:	Human
Host:	Rabbit
Clonality:	Polyclonal
Conjugate:	This IRF2BP2 antibody is un-conjugated
Application:	Western Blotting (WB), Flow Cytometry (FACS)

Product Details

Immunogen:	This I2BP2 antibody is generated from rabbits immunized with a KLH conjugated synthetic peptide between 337-366 amino acids from the Central region of human I2BP2.
Clone:	RB28158
Isotype:	Ig Fraction
Predicted Reactivity:	M
Purification:	This antibody is purified through a protein A column, followed by peptide affinity purification.

Target Details

Target:	IRF2BP2
Alternative Name:	I2BP2 (IRF2BP2 Products)

Target Details

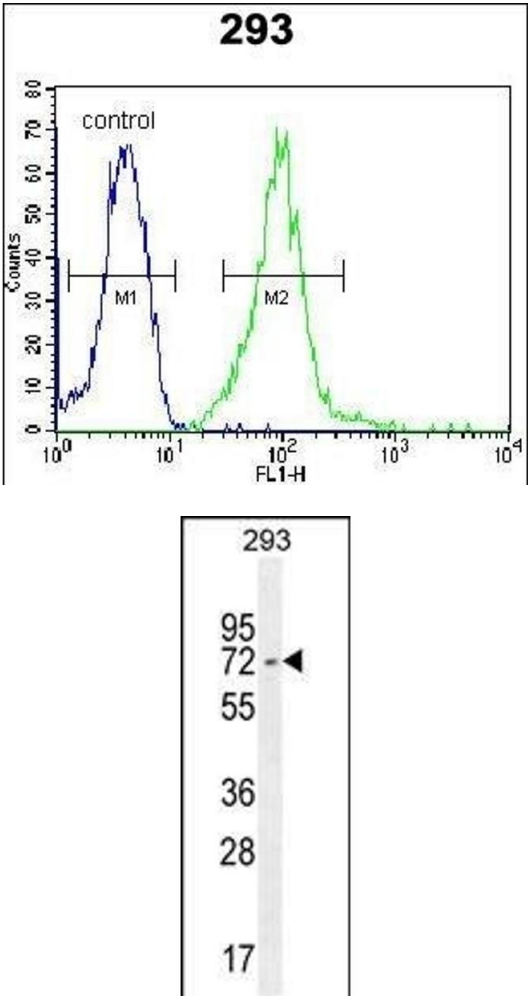
Background:	IRF2BP2 encodes an interferon regulatory factor-2 (IRF2) binding protein that interacts with the C-terminal transcriptional repression domain of IRF2. Alternative splicing results in multiple transcript variants encoding distinct isoforms. [provided by RefSeq].
Molecular Weight:	61025
Gene ID:	359948
NCBI Accession:	NP_001070865 , NP_892017
UniProt:	Q7Z5L9

Application Details

Application Notes:	WB: 1:1000. FC: 1:10~50
Restrictions:	For Research Use only

Handling

Format:	Liquid
Buffer:	Purified polyclonal antibody supplied in PBS with 0.09 % (W/V) sodium azide.
Preservative:	Sodium azide
Precaution of Use:	This product contains Sodium azide: a POISONOUS AND HAZARDOUS SUBSTANCE which should be handled by trained staff only.
Storage:	4 °C, -20 °C
Storage Comment:	Maintain refrigerated at 2-8 °C for up to 6 months. For long term storage store at -20 °C in small aliquots to prevent freeze-thaw cycles.
Expiry Date:	6 months



Flow Cytometry

Image 1. I2BP2 Antibody (Center) (ABIN654481 and ABIN2844216) flow cytometric analysis of 293 cells (right histogram) compared to a negative control cell (left histogram). FITC-conjugated goat-anti-rabbit secondary antibodies were used for the analysis.

Western Blotting

Image 2. I2BP2 Antibody (Center) (ABIN654481 and ABIN2844216) western blot analysis in 293 cell line lysates (35 µg/lane). This demonstrates the I2BP2 antibody detected the I2BP2 protein (arrow).