

Datasheet for ABIN654482
anti-WWC3 antibody (C-Term)[Go to Product page](#)

2 Images

Overview

Quantity:	400 µL
Target:	WWC3
Binding Specificity:	AA 1008-1037, C-Term
Reactivity:	Human
Host:	Rabbit
Clonality:	Polyclonal
Conjugate:	This WWC3 antibody is un-conjugated
Application:	Western Blotting (WB), Immunohistochemistry (Paraffin-embedded Sections) (IHC (p))

Product Details

Immunogen:	This WWC3 antibody is generated from rabbits immunized with a KLH conjugated synthetic peptide between 1008-1037 amino acids from the C-terminal region of human WWC3.
Clone:	RB28161
Isotype:	Ig Fraction
Purification:	This antibody is purified through a protein A column, followed by peptide affinity purification.

Target Details

Target:	WWC3
Alternative Name:	WWC3 (WWC3 Products)
Molecular Weight:	122676

Target Details

Gene ID:	55841
NCBI Accession:	NP_056506
UniProt:	Q9ULE0

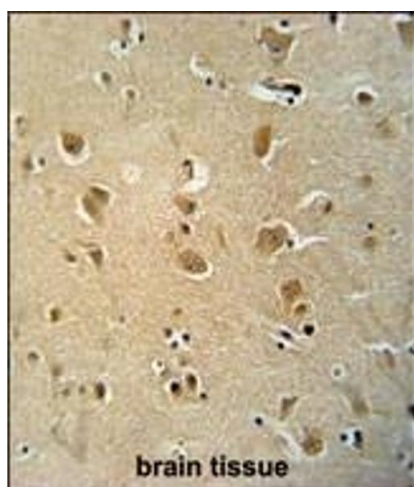
Application Details

Application Notes:	WB: 1:1000. IHC-P: 1:50~100
Restrictions:	For Research Use only

Handling

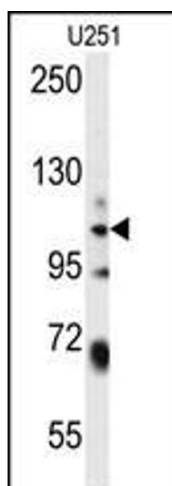
Format:	Liquid
Buffer:	Purified polyclonal antibody supplied in PBS with 0.09 % (W/V) sodium azide.
Preservative:	Sodium azide
Precaution of Use:	This product contains Sodium azide: a POISONOUS AND HAZARDOUS SUBSTANCE which should be handled by trained staff only.
Storage:	4 °C,-20 °C
Storage Comment:	Maintain refrigerated at 2-8 °C for up to 6 months. For long term storage store at -20 °C in small aliquots to prevent freeze-thaw cycles.
Expiry Date:	6 months

Images



Immunohistochemistry (Paraffin-embedded Sections)

Image 1. WWC3 antibody (C-term) (ABIN654482 and ABIN2844217) immunohistochemistry analysis in formalin fixed and paraffin embedded human brain tissue followed by peroxidase conjugation of the secondary antibody and DAB staining. This data demonstrates the use of the WWC3 antibody (C-term) for immunohistochemistry. Clinical relevance has not been evaluated.



Western Blotting

Image 2. WWC3 Antibody (C-term) (ABIN654482 and ABIN2844217) western blot analysis in cell line lysates (35 μ g/lane). This demonstrates the WWC3 antibody detected the WWC3 protein (arrow).