



[Go to Product page](#)

Datasheet for ABIN654485

anti-HTR3E antibody (AA 126-154)

2 Images

Overview

Quantity:	400 µL
Target:	HTR3E
Binding Specificity:	AA 126-154
Reactivity:	Human
Host:	Rabbit
Clonality:	Polyclonal
Conjugate:	This HTR3E antibody is un-conjugated
Application:	Western Blotting (WB), Flow Cytometry (FACS)

Product Details

Immunogen:	This 5HT3E antibody is generated from rabbits immunized with a KLH conjugated synthetic peptide between 126-154 amino acids from the Central region of human 5HT3E.
Clone:	RB28460
Isotype:	Ig Fraction
Purification:	This antibody is purified through a protein A column, followed by peptide affinity purification.

Target Details

Target:	HTR3E
Alternative Name:	5HT3E (HTR3E Products)
Background:	The product of this gene belongs to the ligand-gated ion channel receptor superfamily. HTR3E

Target Details

encodes a subunit E of the type 3 receptor for 5-hydroxytryptamine (serotonin), a biogenic hormone that functions as a neurotransmitter, a hormone, and a mitogen. This receptor causes fast, depolarizing responses in neurons after activation. Genes encoding subunits C, D and E form a cluster on chromosome 3. An alternative splice variant has been described but its full length sequence has not been determined.

Molecular Weight: 51438

Gene ID: 285242

NCBI Accession: [NP_001243542](#), [NP_001243543](#), [NP_872395](#), [NP_938055](#), [NP_938056](#)

UniProt: [A5X5Y0](#)

Application Details

Application Notes: WB: 1:1000. FC: 1:10~50

Restrictions: For Research Use only

Handling

Format: Liquid

Buffer: Purified polyclonal antibody supplied in PBS with 0.09 % (W/V) sodium azide.

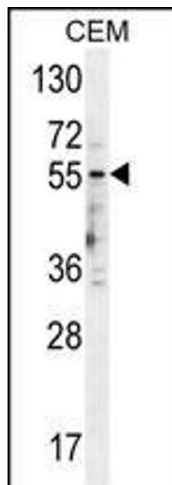
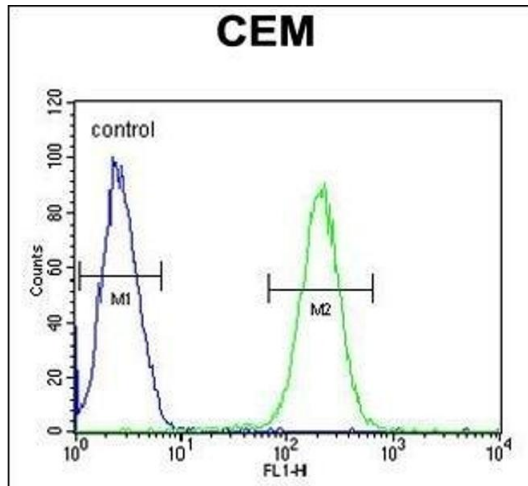
Preservative: Sodium azide

Precaution of Use: This product contains Sodium azide: a POISONOUS AND HAZARDOUS SUBSTANCE which should be handled by trained staff only.

Storage: 4 °C,-20 °C

Storage Comment: Maintain refrigerated at 2-8 °C for up to 6 months. For long term storage store at -20 °C in small aliquots to prevent freeze-thaw cycles.

Expiry Date: 6 months



Flow Cytometry

Image 1. 5HT3E Antibody (Center) (ABIN654485 and ABIN2844220) flow cytometric analysis of CEM cells (right histogram) compared to a negative control cell (left histogram). FITC-conjugated goat-anti-rabbit secondary antibodies were used for the analysis.

Western Blotting

Image 2. 5HT3E Antibody (Center) (ABIN654485 and ABIN2844220) western blot analysis in CEM cell line lysates (35 µg/lane). This demonstrates the 5HT3E antibody detected the 5HT3E protein (arrow).