

Datasheet for ABIN654486
anti-LRRC18 antibody (C-Term)[Go to Product page](#)

2 Images

Overview

Quantity:	400 µL
Target:	LRRC18
Binding Specificity:	AA 149-177, C-Term
Reactivity:	Human, Mouse
Host:	Rabbit
Clonality:	Polyclonal
Conjugate:	This LRRC18 antibody is un-conjugated
Application:	Western Blotting (WB), Immunohistochemistry (Paraffin-embedded Sections) (IHC (p))

Product Details

Immunogen:	This LRC18 antibody is generated from rabbits immunized with a KLH conjugated synthetic peptide between 149-177 amino acids from the C-terminal region of human LRC18.
Clone:	RB28486
Isotype:	Ig Fraction
Purification:	This antibody is purified through a protein A column, followed by peptide affinity purification.

Target Details

Target:	LRRC18
Alternative Name:	LRC18 (LRRC18 Products)
Background:	May be involved in the regulation of spermatogenesis and sperm maturation (By similarity).

Target Details

Molecular Weight:	29737
Gene ID:	474354
NCBI Accession:	NP_001006940
UniProt:	Q8N456

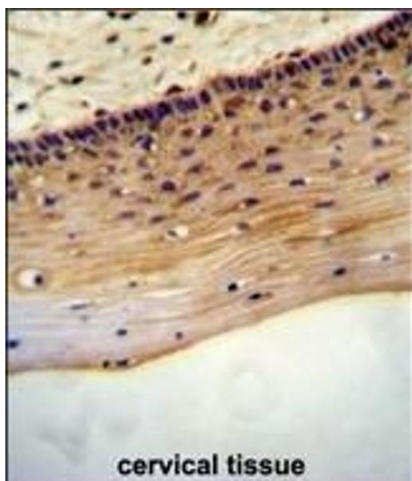
Application Details

Application Notes:	WB: 1:1000. IHC-P: 1:50~100
Restrictions:	For Research Use only

Handling

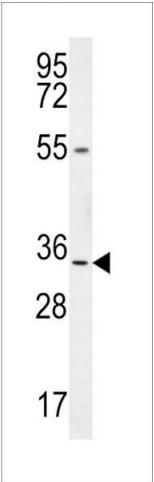
Format:	Liquid
Buffer:	Purified polyclonal antibody supplied in PBS with 0.09 % (W/V) sodium azide.
Preservative:	Sodium azide
Precaution of Use:	This product contains Sodium azide: a POISONOUS AND HAZARDOUS SUBSTANCE which should be handled by trained staff only.
Storage:	4 °C, -20 °C
Storage Comment:	Maintain refrigerated at 2-8 °C for up to 6 months. For long term storage store at -20 °C in small aliquots to prevent freeze-thaw cycles.
Expiry Date:	6 months

Images



Immunohistochemistry (Paraffin-embedded Sections)

Image 1. LRC18 antibody (C-term) (ABIN654486 and ABIN2844221) immunohistochemistry analysis in formalin fixed and paraffin embedded human cervical tissue followed by peroxidase conjugation of the secondary antibody and DAB staining. This data demonstrates the use of the LRC18 antibody (C-term) for immunohistochemistry. Clinical relevance has not been evaluated.



Western Blotting

Image 2. LRC18 Antibody (C-term) (ABIN654486 and ABIN2844221) western blot analysis in mouse bladder tissue lysates (35 µg/lane). This demonstrates the LRC18 antibody detected the LRC18 protein (arrow).