

Datasheet for ABIN654494
anti-LRRC57 antibody (C-Term)

3 Images

[Go to Product page](#)

Overview

Quantity:	400 µL
Target:	LRRC57
Binding Specificity:	AA 198-227, C-Term
Reactivity:	Human
Host:	Rabbit
Clonality:	Polyclonal
Conjugate:	This LRRC57 antibody is un-conjugated
Application:	Western Blotting (WB), Flow Cytometry (FACS), Immunohistochemistry (Paraffin-embedded Sections) (IHC (p))

Product Details

Immunogen:	This LRRC57 antibody is generated from rabbits immunized with a KLH conjugated synthetic peptide between 198-227 amino acids from the C-terminal region of human LRRC57.
Clone:	RB28188
Isotype:	Ig Fraction
Predicted Reactivity:	Rat
Purification:	This antibody is purified through a protein A column, followed by peptide affinity purification.

Target Details

Target:	LRRC57
---------	--------

Target Details

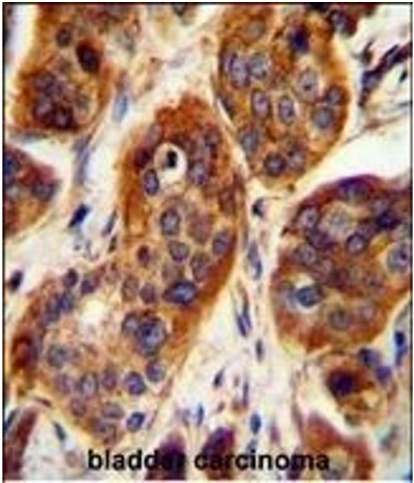
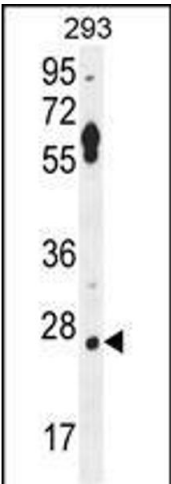
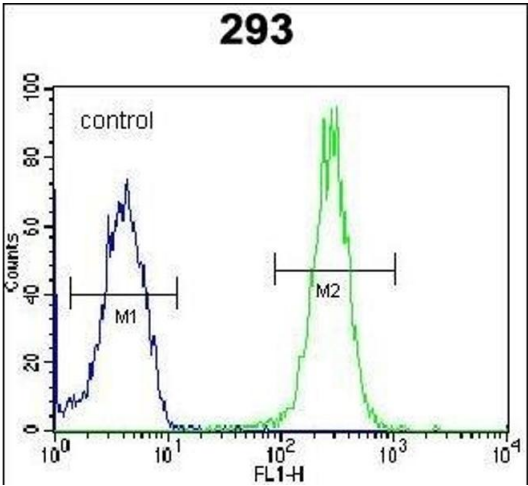
Alternative Name:	LRRC57 (LRRC57 Products)
Background:	LRRC57 contains 7 LRR (leucine rich repeats). However, the exact function remains unknown.
Gene ID:	255252
NCBI Accession:	NP_694992
UniProt:	Q8N9N7

Application Details

Application Notes:	WB: 1:1000. IHC-P: 1:50~100. FC: 1:10~50
Restrictions:	For Research Use only

Handling

Format:	Liquid
Buffer:	Purified polyclonal antibody supplied in PBS with 0.09 % (W/V) sodium azide.
Preservative:	Sodium azide
Precaution of Use:	This product contains Sodium azide: a POISONOUS AND HAZARDOUS SUBSTANCE which should be handled by trained staff only.
Storage:	4 °C,-20 °C
Storage Comment:	Maintain refrigerated at 2-8 °C for up to 6 months. For long term storage store at -20 °C in small aliquots to prevent freeze-thaw cycles.
Expiry Date:	6 months



Flow Cytometry

Image 1. LRRC57 Antibody (C-term) (ABIN654494 and ABIN2844226) flow cytometric analysis of 293 cells (right histogram) compared to a negative control cell (left histogram). FITC-conjugated goat-anti-rabbit secondary antibodies were used for the analysis.

Western Blotting

Image 2. LRRC57 Antibody (C-term) (ABIN654494 and ABIN2844226) western blot analysis in 293 cell line lysates (35 µg/lane). This demonstrates the LRRC57 antibody detected the LRRC57 protein (arrow).

Immunohistochemistry (Paraffin-embedded Sections)

Image 3. LRRC57 Antibody (C-term) (ABIN654494 and ABIN2844226) immunohistochemistry analysis in formalin fixed and paraffin embedded human bladder carcinoma followed by peroxidase conjugation of the secondary antibody and DAB staining. This data demonstrates the use of the LRRC57 Antibody (C-term) for immunohistochemistry. Clinical relevance has not been evaluated.