



[Go to Product page](#)

Datasheet for ABIN654511
anti-CCDC8 antibody (C-Term)

2 Images

Overview

Quantity:	400 µL
Target:	CCDC8
Binding Specificity:	AA 390-418, C-Term
Reactivity:	Human
Host:	Rabbit
Clonality:	Polyclonal
Conjugate:	This CCDC8 antibody is un-conjugated
Application:	Western Blotting (WB), Immunohistochemistry (Paraffin-embedded Sections) (IHC (p))

Product Details

Immunogen:	This CCDC8 antibody is generated from rabbits immunized with a KLH conjugated synthetic peptide between 390-418 amino acids from the C-terminal region of human CCDC8.
Clone:	RB28205
Isotype:	Ig Fraction
Purification:	This antibody is purified through a protein A column, followed by peptide affinity purification.

Target Details

Target:	CCDC8
Alternative Name:	CCDC8 (CCDC8 Products)
Molecular Weight:	59374

Target Details

Gene ID: 83987

NCBI Accession: [NP_114429](#)

UniProt: [Q9H0W5](#)

Application Details

Application Notes: WB: 1:1000. IHC-P: 1:50~100

Restrictions: For Research Use only

Handling

Format: Liquid

Buffer: Purified polyclonal antibody supplied in PBS with 0.09 % (W/V) sodium azide.

Preservative: Sodium azide

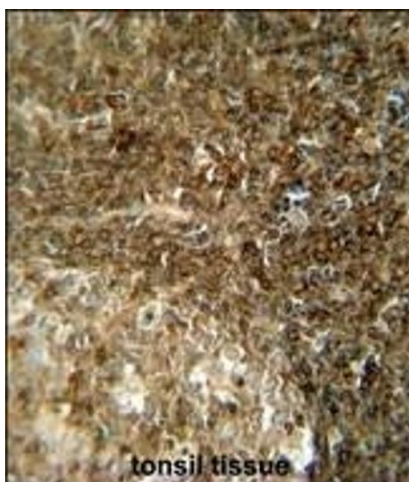
Precaution of Use: This product contains Sodium azide: a POISONOUS AND HAZARDOUS SUBSTANCE which should be handled by trained staff only.

Storage: 4 °C, -20 °C

Storage Comment: Maintain refrigerated at 2-8 °C for up to 6 months. For long term storage store at -20 °C in small aliquots to prevent freeze-thaw cycles.

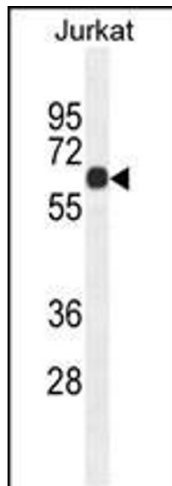
Expiry Date: 6 months

Images



Immunohistochemistry (Paraffin-embedded Sections)

Image 1. CCDC8 antibody (C-term) (ABIN654511 and ABIN2844238) immunohistochemistry analysis in formalin fixed and paraffin embedded human tonsil tissue followed by peroxidase conjugation of the secondary antibody and DAB staining. This data demonstrates the use of the CCDC8 antibody (C-term) for immunohistochemistry. Clinical relevance has not been evaluated.



Western Blotting

Image 2. CCDC8 Antibody (C-term) (ABIN654511 and ABIN2844238) western blot analysis in Jurkat cell line lysates (35 µg/lane). This demonstrates the CCDC8 antibody detected the CCDC8 protein (arrow).