



[Go to Product page](#)

Datasheet for ABIN654517

anti-NUDT8 antibody (N-Term)

3 Images

Overview

Quantity:	400 µL
Target:	NUDT8
Binding Specificity:	AA 42-70, N-Term
Reactivity:	Human
Host:	Rabbit
Clonality:	Polyclonal
Conjugate:	This NUDT8 antibody is un-conjugated
Application:	Western Blotting (WB), Flow Cytometry (FACS), Immunohistochemistry (Paraffin-embedded Sections) (IHC (p))

Product Details

Immunogen:	This NUDT8 antibody is generated from rabbits immunized with a KLH conjugated synthetic peptide between 42-70 amino acids from the N-terminal region of human NUDT8.
Clone:	RB27955
Isotype:	Ig Fraction
Purification:	This antibody is purified through a protein A column, followed by peptide affinity purification.

Target Details

Target:	NUDT8
Alternative Name:	NUDT8 (NUDT8 Products)

Target Details

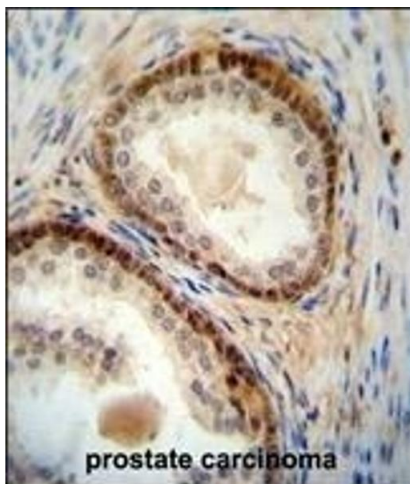
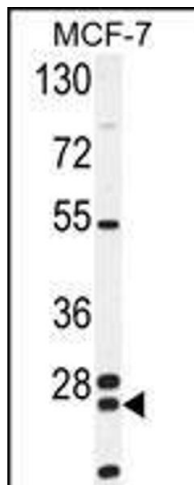
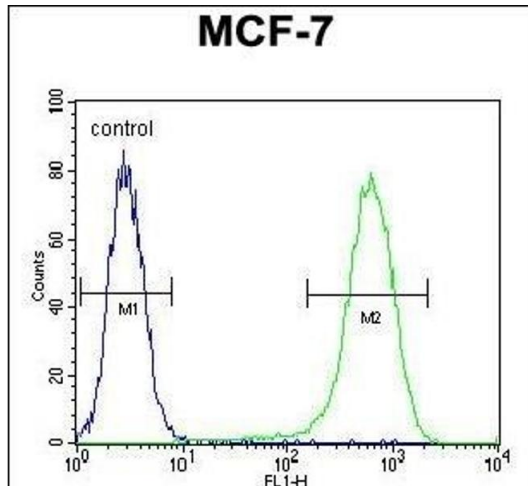
Background:	Probably mediates the hydrolysis of some nucleoside diphosphate derivatives (By similarity).
Molecular Weight:	25370
Gene ID:	254552
NCBI Accession:	NP_001230679 , NP_862826
UniProt:	Q8WV74

Application Details

Application Notes:	WB: 1:1000. IHC-P: 1:50~100. FC: 1:10~50
Restrictions:	For Research Use only

Handling

Format:	Liquid
Buffer:	Purified polyclonal antibody supplied in PBS with 0.09 % (W/V) sodium azide.
Preservative:	Sodium azide
Precaution of Use:	This product contains Sodium azide: a POISONOUS AND HAZARDOUS SUBSTANCE which should be handled by trained staff only.
Storage:	4 °C, -20 °C
Storage Comment:	Maintain refrigerated at 2-8 °C for up to 6 months. For long term storage store at -20 °C in small aliquots to prevent freeze-thaw cycles.
Expiry Date:	6 months



Flow Cytometry

Image 1. NUDT8 Antibody (N-term) (ABIN654517 and ABIN2844241) flow cytometric analysis of MCF-7 cells (right histogram) compared to a negative control cell (left histogram). FITC-conjugated goat-anti-rabbit secondary antibodies were used for the analysis.

Western Blotting

Image 2. NUDT8 Antibody (N-term) (ABIN654517 and ABIN2844241) western blot analysis in MCF-7 cell line lysates (35 µg/lane). This demonstrates the NUDT8 antibody detected the NUDT8 protein (arrow).

Immunohistochemistry (Paraffin-embedded Sections)

Image 3. NUDT8 antibody (N-term) (ABIN654517 and ABIN2844241) immunohistochemistry analysis in formalin fixed and paraffin embedded human prostate carcinoma followed by peroxidase conjugation of the secondary antibody and DAB staining. This data demonstrates the use of the NUDT8 antibody (N-term) for immunohistochemistry. Clinical relevance has not been evaluated.