



[Go to Product page](#)

Datasheet for ABIN654519
anti-LRRC25 antibody (C-Term)

1 Image

Overview

Quantity:	400 µL
Target:	LRRC25
Binding Specificity:	AA 242-270, C-Term
Reactivity:	Human
Host:	Rabbit
Clonality:	Polyclonal
Conjugate:	This LRRC25 antibody is un-conjugated
Application:	Western Blotting (WB)

Product Details

Immunogen:	This LRRC25 antibody is generated from rabbits immunized with a KLH conjugated synthetic peptide between 242-270 amino acids from the C-terminal region of human LRRC25.
Clone:	RB27966
Isotype:	Ig Fraction
Purification:	This antibody is purified through a protein A column, followed by peptide affinity purification.

Target Details

Target:	LRRC25
Alternative Name:	LRRC25 (LRRC25 Products)
Background:	May be involved in the activation of cells of innate and acquired immunity.

Target Details

Molecular Weight:	33179
Gene ID:	126364
NCBI Accession:	NP_660299
UniProt:	Q8N386

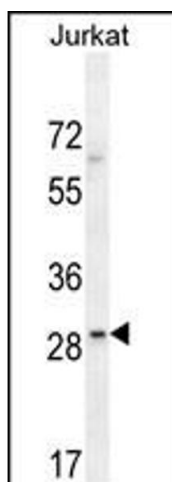
Application Details

Application Notes:	WB: 1:1000
Restrictions:	For Research Use only

Handling

Format:	Liquid
Buffer:	Purified polyclonal antibody supplied in PBS with 0.09 % (W/V) sodium azide.
Preservative:	Sodium azide
Precaution of Use:	This product contains Sodium azide: a POISONOUS AND HAZARDOUS SUBSTANCE which should be handled by trained staff only.
Storage:	4 °C,-20 °C
Storage Comment:	Maintain refrigerated at 2-8 °C for up to 6 months. For long term storage store at -20 °C in small aliquots to prevent freeze-thaw cycles.
Expiry Date:	6 months

Validation report #103541 for Western Blotting (WB)



Western Blotting

Image 1. LRRC25 Antibody (C-term) (ABIN654519 and ABIN2844242) western blot analysis in Jurkat cell line lysates (35 µg/lane). This demonstrates the LRRC25 antibody detected the LRRC25 protein (arrow).