



[Go to Product page](#)

Datasheet for ABIN654524

## anti-GPR144 antibody (AA 342-370)

### 1 Image

#### Overview

Quantity:	400 µL
Target:	GPR144
Binding Specificity:	AA 342-370
Reactivity:	Human
Host:	Rabbit
Clonality:	Polyclonal
Conjugate:	This GPR144 antibody is un-conjugated
Application:	Western Blotting (WB)

#### Product Details

Immunogen:	This GPR144 antibody is generated from rabbits immunized with a KLH conjugated synthetic peptide between 342-370 amino acids from the Central region of human GPR144.
Clone:	RB28245
Isotype:	Ig Fraction
Purification:	This antibody is purified through a protein A column, followed by peptide affinity purification.

#### Target Details

Target:	GPR144
Alternative Name:	GPR144 ( <a href="#">GPR144 Products</a> )
Background:	GPR144 is an orphan receptor.

## Target Details

Molecular Weight: 104087

Gene ID: 347088

UniProt: [Q7Z7M1](#)

## Application Details

Application Notes: WB: 1:1000

Restrictions: For Research Use only

## Handling

Format: Liquid

Buffer: Purified polyclonal antibody supplied in PBS with 0.09 % (W/V) sodium azide.

Preservative: Sodium azide

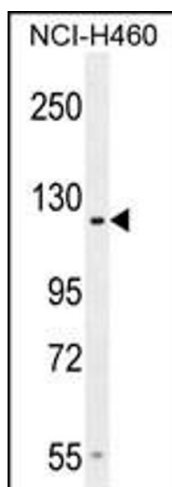
Precaution of Use: This product contains Sodium azide: a POISONOUS AND HAZARDOUS SUBSTANCE which should be handled by trained staff only.

Storage: 4 °C, -20 °C

Storage Comment: Maintain refrigerated at 2-8 °C for up to 6 months. For long term storage store at -20 °C in small aliquots to prevent freeze-thaw cycles.

Expiry Date: 6 months

## Images



### Western Blotting

**Image 1.** GP Antibody (Center) (ABIN654524 and ABIN2844246) western blot analysis in NCI- cell line lysates (35 µg/lane). This demonstrates the GP antibody detected the GP protein (arrow).